



Sigma Simplicity Light & Café

Digital Display Frame

Issue 2
April 2017



Contents

Westomatic 12" Digital Display Frame User Guide (Sigma Simplicity and Light)

Westomatic 12" Digital Display Frame User Guide.....	2
Introduction	2
Key Features.....	2
Digital Display Screen Specification	3
Remote Control.....	3
Rear Panel Control.....	4
Setting up the Screen	4
Westomatic Default Settings	4
Default Setup Settings	5
Images Sizes.....	6
Changing your own menu	7
Installing files onto the Digital Display	8
Deleting Files	8
Loading / Adding Files.....	10

Westomatic 20" Digital Display Frame User Guide (Sigma Café)

Westomatic 20" Digital Display Frame User Guide.....	12
Introduction	12
Key Features.....	12
Digital Display Screen Specification	13
Remote Control.....	13
Rear Panel Control.....	14
Setting up the Screen	14
Westomatic Default Settings	14
Default Setup Settings	15
Images Sizes.....	16
Installing files onto the Digital Display	17
Deleting Files	18
Scrolling subtitles	19



Westomatic 12" Digital Display Frame User Guide

Introduction

Thank you for purchasing your Sigma Simplicity or Sigma Light vending machine with us. As well as getting the latest Italian designed espresso brewer you have the ability to change the look and feel of your vending machine by adding your own personal touch. You have the ability to change depending on machine range:

- Screen colours and design (*Simplicity and Light*)
- Change drinks menu from the default layout (*Simplicity*)
- Change the media screen content (*Simplicity and Light*)
- Change the adverts on the screen (*Simplicity and Light*)
- Change how the Media is played on the screen and how often (*Simplicity and Light*)
- Change the standard cups to your branded versions or add extra information such as allergens or nutrition information. (*Simplicity and Light*)

This guide will introduce you to Westomatic Digital Display and will explain the various ways you can use it to customise your machine.

NOTE: This guide is only for Westomatic Sigma Simplicity and Light machines. An alternative manual covers the Sigma Touch.

If your Sigma Simplicity machine did not come with the default PowerPoint drinks menu slide show then for additional information, up to date support or to contact our Technical Support Team call +44(0) 1626 323100 or visit Westomatic at: www.westomatic.com

Key Features

- Change allergen information
- Change company logo
- Change drink prices
- Change drinks for seasonal variations
- Stylized menu page
- Add media screens and define the times that the images is displayed
- Change Drinks Cups to match your brand
- Add "how to use" page to inform the user how to use the machine
- Promotion screens to up sell syrup shots
- Generate income from selling advertising space
- Very simple installation procedure – Screen templates are available on request.
- Use Still or video images

For the purposes of this manual we will not be covering the installation or creation of Video files



Digital Display Screen Specification

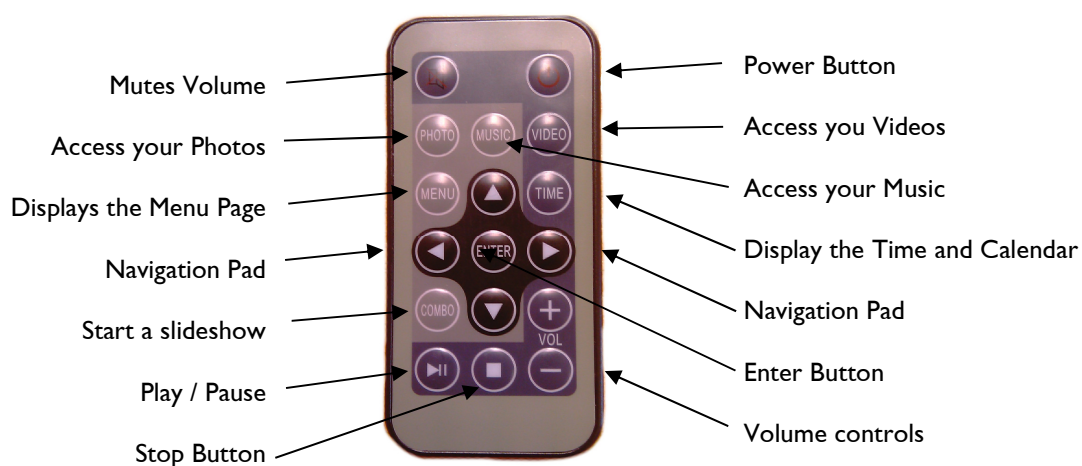
Specification of the Westomatic Digital Display Screen

Type	Digital Display Screen
Size	12.1 Inch
Resolution	800 x 600
Supply Voltage	12v dc
Power	6 Watts
Working Temperature	-20 to +65 Degrees C
Response time	25ms
Display Mode	4:3
File Format	JPEG , MPEG I , MPEG2 , MP3 , MPEG4 (AVI)
Photo Size	12Mega Pixels
Cards	SD / MMC / MS / USB
USB Port	USB Host , USB Slave

- JPEG slide show with user selectable transition effects.
- Plays slide shows with MP3 music in the background.
- Internal Speakers.
- Internal memory to store menus and adverts.
- Can run files from a remote USB stick.
- Credit card size remote control.
- External speakers can be plugged in to amplify sound.
- Rear panel navigation buttons.
- User friendly on-screen display lets you access all controls easily.

Remote Control

Digital Photo frame remote control unit functions.



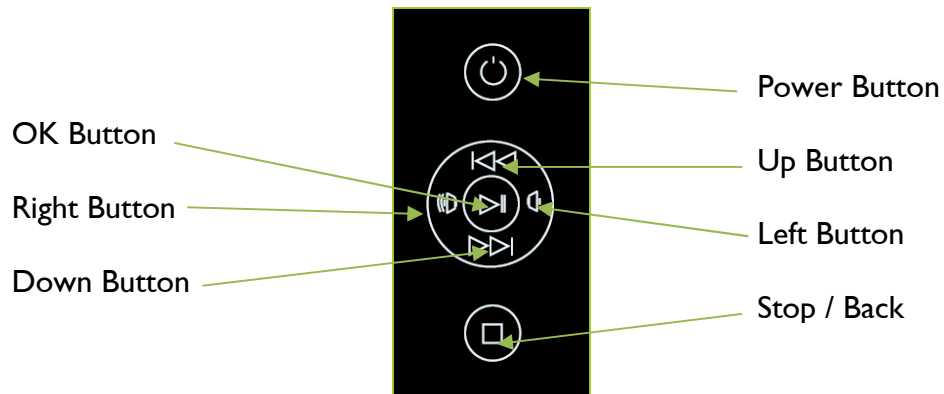
Replacement battery type CR2025



Rear Panel Control

On the right side of the photo frame there is a set of buttons looking like FIG 1. These buttons are used to navigate around the screen.

The function of these buttons is as shown from the rear of the screen.

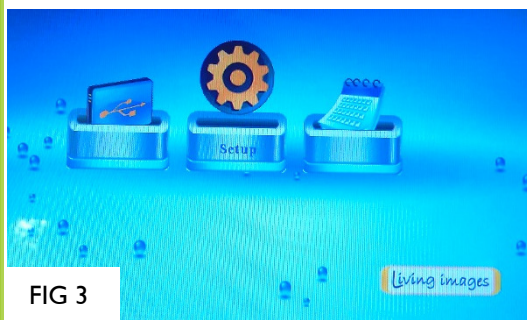
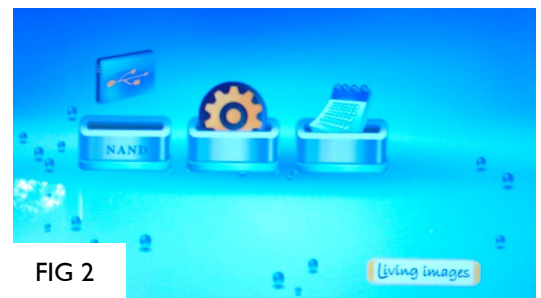


Setting up the Screen

Westomatic Default Settings

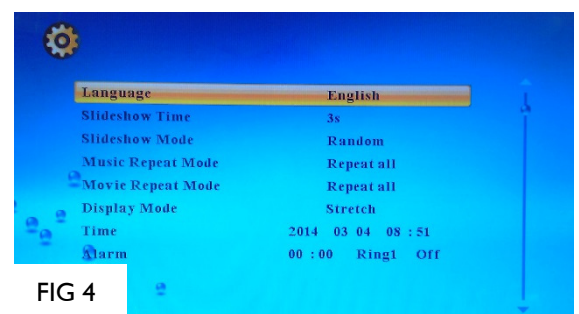
Upon turning on the digital frame for the first time with no USB stick or no content loaded onto the internal storage you will see the menu as in FIG 2.

This will enable you with the use of either the remote control or the buttons on the rear panel to set the default settings on the display. Remember to put in the battery of the remote.



Use the left and right arrows to move the icon to the Setup menu as shown in FIG 3 and press the Enter/OK Button to enter the setup screen.

The set up screen will look like that of FIG 4. Use the navigation buttons up down left and right to select and change the settings on the digital display and press Enter/OK to save after the change.





The chart below represents the default settings entered prior to leaving the factory.

Default Setup Settings

Language		English	
Slideshow Time		3s	
Slideshow Mode		Door_Open	
Music Repeat Mode		Repeat All	
Movie Repeat Mode		Repeat All	
Display Mode		Stretch	
Time	Set the current Date and Time setting here		
Alarm	00:00	Ring 1	OFF
Brightness		8	
Contrast		8	
Saturation		8	
Auto Power On	00:00	OFF	
Auto Power Off	00:00	OFF	
Start Mode Select		Picture	
Slide Show Option		Sequence	
Default			

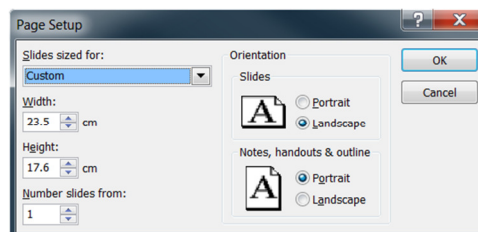


Images Sizes

The screen image size is 800 Pixels x 600 Pixels

To design the screen menus or adverts you can use any graphical software that you have which can produce a JPG file. There are many free design software tools available online.

The default menus used on the simplicity are designed using PowerPoint using the following settings. The same program can be used to create adverts on the Sigma Light.



Using PowerPoint allows us to create a menu and alter the drink prices and add allergen or calorific information as required forming the menu screens as shown below.



In the bottom left hand corner of every screen created by Westomatic is a four digit serial number circled above, calling Westomatic and quoting the serial number will enable us to track down and alter your menu or you may request a copy of the file so that you can change the menus yourself.

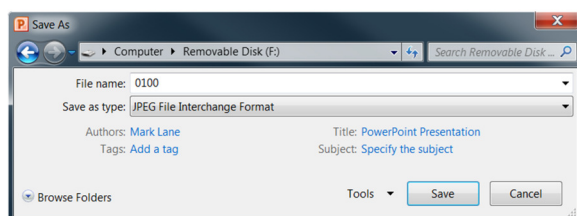
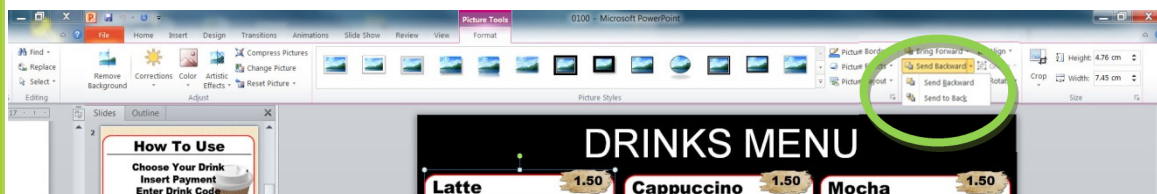
Using these setting will produce a file size of 888 x 665 Pixels , with the photo frame set on stretch the image will be shrunk to fit. You will not see any changes in the image quality.



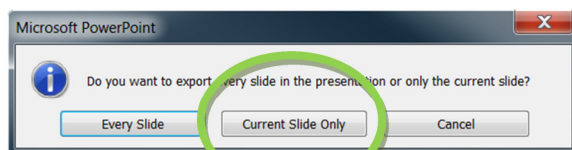
Changing your own menu

When you quote the four digit serial number and request a copy of the PowerPoint menu for yourself, Westomatic will supply you with the file which can be opened in PowerPoint. Alternative drink menu labels are available on request or by visiting WestoNet.

PowerPoint works as a series of layers to which anything you copy and paste will come to the top of the page and may move above the price label blocking it from view. If this is the case on the Picture Tools **FORMAT** tab and click **SEND TO BACK** to send the image behind the price label.



After editing your menu save the file as a standard PowerPoint file for future use then click on the page you require to save on the screen then click **FILE**, **SAVE AS** in the pop up menu change the “Save as Type” from “PowerPoint Presentation” to “JPEG File Interchange Format” then click **SAVE**.



On the next screen select the “Save Current Slide Only”. Repeat this process for any other slides you have.



Installing files onto the Digital Display

Save your JPG menu or adverts onto a USB stick.

Switch on the machine and insert your USB stick into the USB port on the left side as shown. FIG 5

Do not put the USB stick into the same place that you would use to upload the machine Audit, as this has no effect on the photo frame at all.



FIG 5

Deleting Files



If the screen adverts are running press the stop button (See page 4) the screen will / may show you a file manager with thumbnails of images on the screen. Regardless of the content on the screen press the BACK button many times, you will eventually come to the top level menu which will show these 4 icons on the screen.

<USB> <NAND> <SETUP> <CALENDAR>

Press left or right until NAND is highlighted then press the OK button in the middle.

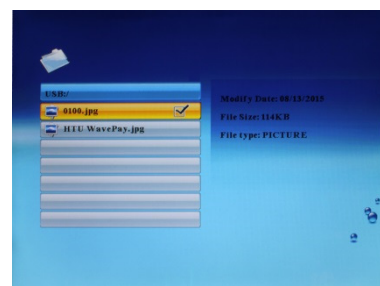


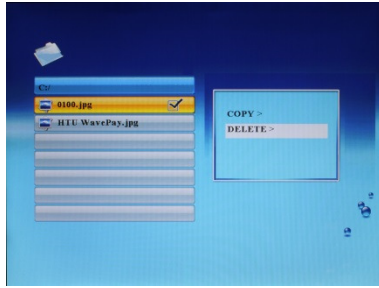
You will now see four menus on the screen labelled

<Movie> <Music> <Photo> <File>

Use Left / Right until FILE is selected and press the OK button.

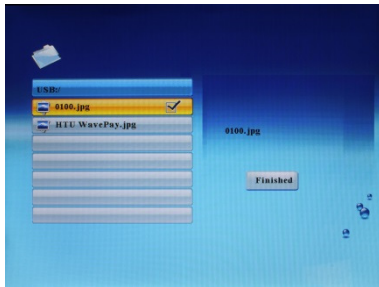
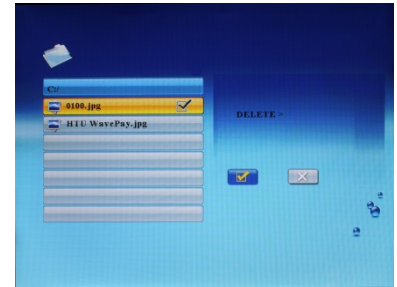
You will now see a file explorer menu of all the files on the screen. Using the up/down buttons select the file you **do not want** any more with the yellow bar then press LEFT you will now have a tick on that line. Press the OK button and a menu will come up on the right with COPY and DELETE options.





Press the DOWN button until DELETE> is highlighted in white then press OK.

Press right button to select the blue tick and press the OK to confirm deleting the file.



Press the OK button when FINISHED is shown.

Repeat this process for all other files you want to delete.



Loading / Adding Files



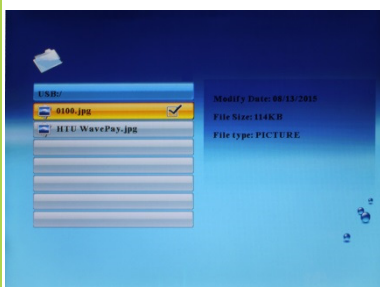
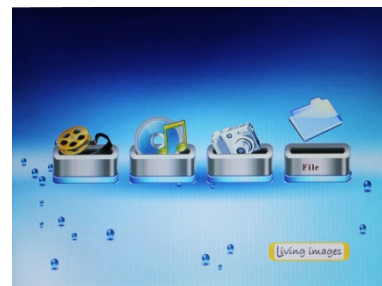
If the screen adverts are running press the stop button (See page 4) the screen will / may show you a file manager with thumbnails of images on the screen. Regardless of the content on the screen press the BACK button many times, you will eventually come to the top level menu which will show these 4 icons on the screen.

<USB> <NAND> <SETUP> <CALENDAR>

Using the LEFT / RIGHT buttons highlight the USB and click OK
You will now see four menus shown right.

<Movie> <Music> <Photo> <File>

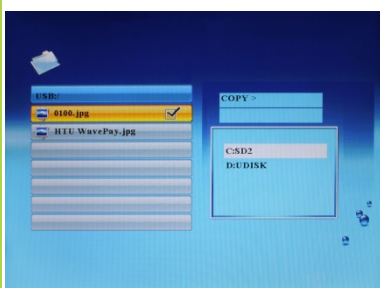
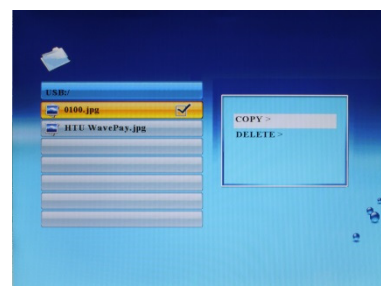
Use left / Right until FILE is selected and press the OK button.



You will now see the contents of the USB stick.
If you stored your file in a directory then use UP / DOWN buttons to navigate to the directory and OK to enter the directory.

Using the UP/DOWN buttons highlight the file you want to copy in yellow then press the RIGHT button, this will place a tick on the selected line.

Click OK you will now see the COPY> and DELETE> menu.
Using the UP/DOWN buttons select the COPY> this will be highlighted in white.
Press OK.



You will now have two options of where to copy the file SD2 or SD1 is the internal SD card in the Digital Display and UDISK is your USB drive.

Using the UP/DOWN buttons highlight the SD1/2 menu option in white and press the RIGHT button. The COPY> above will change to read COPY> C:\. At this point press the OK button, the display will now show the progress of the file being copied.
Press Ok on the FINISHED screen.

Repeat this for all other files to be copied.



When you have finished copying the files required press the BACK button many times, you will eventually come to the top level menu again.

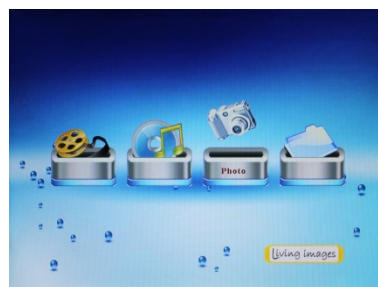
<USB> <NAND> <SETUP> <CALENDAR>

Using the LEFT / RIGHT buttons highlight the NAND and click OK. You will now see four menus.

<Movie> <Music> <Photo> <File>

Use LEFT / RIGHT until PHOTO is selected and press the OK button. You will now see all your files.

Once you are happy that all the images you require have been copied onto the Digital Display you can now remove your USB stick and press the OK button on any picture and the slide show will begin.





Westomatic 20" Digital Display Frame User Guide

Introduction

Thank you for purchasing your Sigma Café vending machine with us. As well as getting the latest Italian designed espresso brewer you have the ability to change the look and feel of your vending machine by adding your own personal touch. You have the ability to change:

- Screen colours and design
- Change the media screen content
- Change the adverts on the screen
- Change how the Media is played on the screen and how often
- Add extra information such as allergens or nutrition information.
- Display how to use the machine information
- Run drink adverts to advertise the drinks on offer.
- Run your own or purchased video or photo content.

This guide will introduce you to Westomatic Digital Display and will explain the various ways you can use it to customise your machine.

NOTE: This section of the guide is only for the Westomatic Sigma Café. The Sigma Simplicity and Light machines are at the front of this guide see page 2 . An alternative manual covers the Sigma Touch.

Key Features

- Add allergen information
- Add company logo
- Add big drink prices on the screen
- Advertise drinks for seasonal variations
- Stylized menu page
- Add photo screens and define the time that the images is displayed for
- Add "how to use" page to inform the user how to use the machine
- Promotion screens to up sell syrup shots
- Generate income from selling advertising space
- Very simple installation procedure – Screen templates are available on request.
- Use Still or video images
- Purchase stock or customised video content from Westomatic approved suppliers who know the industry.
- Compatible with the following range of memory card formats: Secure Digital™ Multimediacard™ and Memory Stick™.
- Read files stored on a removable USB stick.
- Read files stored on the 2GB internal memory

For the purposes of this manual we will not be covering the creation of Video files



Digital Display Screen Specification

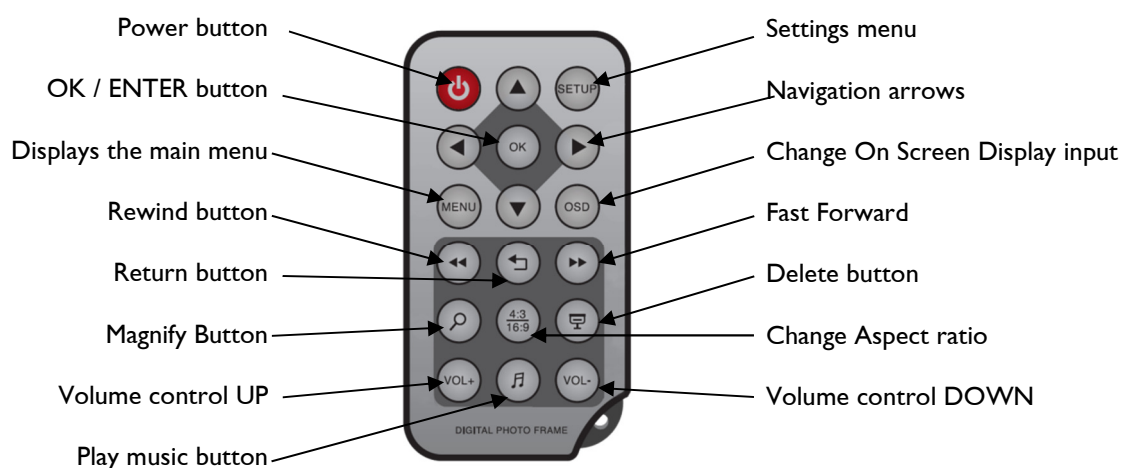
Specification of the Westomatic Digital Display Screen

Type	Digital Display Screen
Size	20 Inch
Resolution	1280 x 960
Supply Voltage	12v dc
Power	6 Watts
Working Temperature	-20 to +65 Degrees C
Response time	25ms
Display Mode	4:3 or 16:9
File Format	JPEG , MPEG1 , MPEG2 , MP3 , MPEG4 (RMP4 , DivX5, DivX4 ,Xvid ,DIVX) AVI, H.264, RMVB, MP3
Photo Size	12 Mega Pixels
Cards	SD / SDHC / MMC / MS / USB (32GB Max)
USB Port	USB 2.0 Host and mini USB
Built in speakers	2 x 1watt speaker system

- JPEG slide show with user selectable transition effects.
- Plays slide shows with MP3 music in the background.
- Internal Speakers.
- Internal 2GB memory to store menus and adverts.
- Can run files from a removable USB stick.
- Credit card size remote control. IR detector on front of door.
- Rear panel navigation buttons.
- Run scrolling text messages to run with all video or photos like a news or menu ticker.
- User friendly on-screen display lets you access all controls easily.
- Instantly plays media stored on a supported memory card.

Remote Control

Digital Photo frame remote control unit functions.

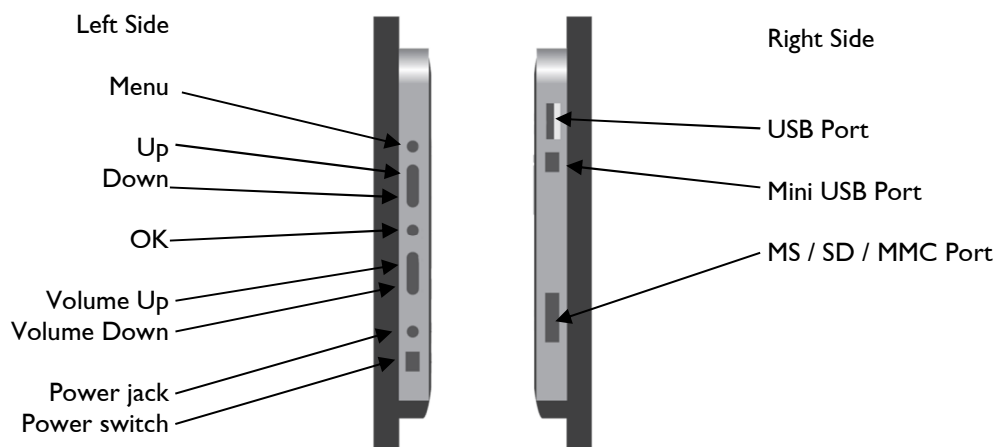


Replacement battery type CR2025



The functions of these buttons and media slots are shown below:

NOTE: It is recommended to use the remote control to navigate the menu system.



Setting up the Screen

Westomatic Default Settings

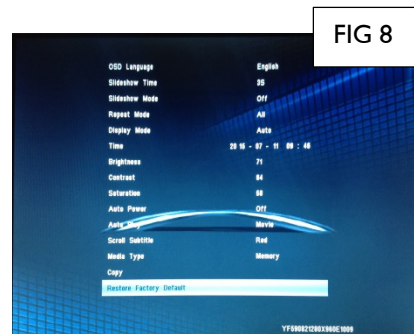
Remember to remove the battery plastic tab before first use. For effective use, point the remote control towards the sensor, which is located centrally just under the screen. You are now ready to use the remote control to set the default settings on the display.



Use the left and right arrows to move the icon at the bottom of the screen to the Setup menu as shown in FIG 7 and press the OK Button to enter the setup screen.

The set up screen will look like that of FIG 8

Use the navigation buttons up down left and right to select and change the settings on the digital display and press Enter/OK to save after the change.





The chart below represents the default settings entered prior to leaving the factory.

Default Setup Settings

OSD Language		English	
Slideshow Time		3s	
Slideshow Mode		OFF	
Repeat Mode		All	
Display Mode		Auto	
Time	Set the current Date and Time setting here		
Brightness		71	
Contrast		65	
Saturation		58	
Auto Power		OFF	
Auto Play		Movie	
Scroll Subtitle		Red	
Media Type		Memory	
Default			

These are recommended default settings and will depend on the media type you are using.

If you intend to display JPEG photos and not run videos you need to change the Auto Play from MOVIE to PICTURE.

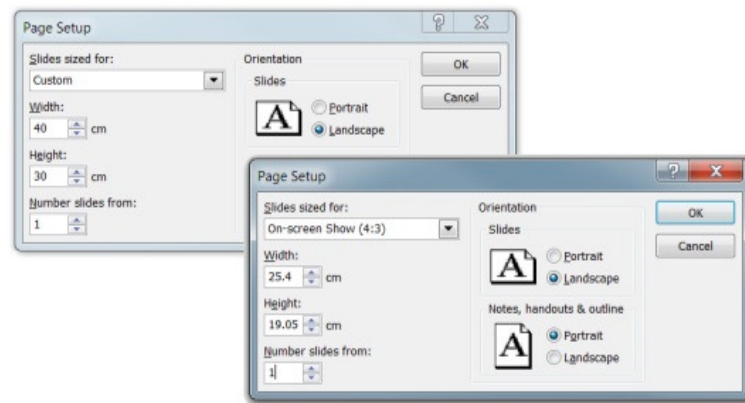


Images Sizes

The screen Pixel size (1280 Pixels x 960 Pixels) or screen physical size (40cm W x 30cm H) or ratio of 4:3

To design the screen menus or adverts you can use any graphical software that you have which can produce a JPG file for stills or MP4 for videos. There are many free design software tools available online.

Simple adverts used on the Sigma café can be designed by using PowerPoint™ with one of the following page settings depending on the software and version you are using.



Using PowerPoint allows you to create a drinks menu with drink prices and add allergen or calorific information as required forming a typical menu screens could be as shown below.

WHOLE BEAN COFFEE

HOT BEVERAGE MENU		Regular	Go-Large	
  	LATTE  Mellow milky coffee	£1.75	£2.00	
	CAPPUCCINO  Frothy coffee	£1.75	£2.00	
	AMERICANO Strong black coffee	£1.75	£2.00	
	MOCHA  Milky coffee with chocolate	£1.75	£2.00	
	FLAT WHITE  Strong white coffee	£1.75	£2.00	
	ESPRESSO Short shot of intense coffee	£1.75	£2.00	
	Add a flavour shot for 30p			
 	TEA  Freshly brewed tea	£1.75	£2.00	
	HOT CHOCOLATE  Rich hot chocolate	£1.75	£2.00	
	CREAMCHOC  Indulgent hot chocolate	£1.75	£2.00	
	MILKSHAKES  Cool milk flavoured drinks	£1.75	£2.00	
		  CONTAINS MILK		

By using PowerPoint you can save each page as a JPEG file to be loaded onto the Sigma café screen, some versions of PowerPoint will allow you save a presentation as a MP4 video so you can create a slide show with animations and save the presentation as a MP4 video.



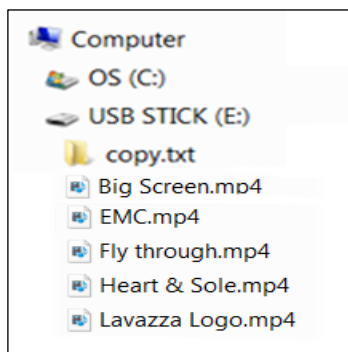
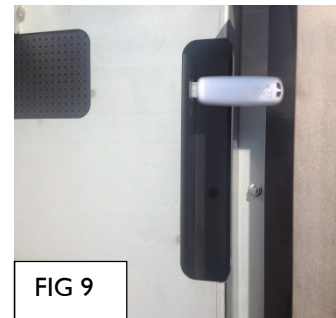
Installing files onto the Digital Display

Save your JPG/MP4 files onto a USB stick in the root directory.

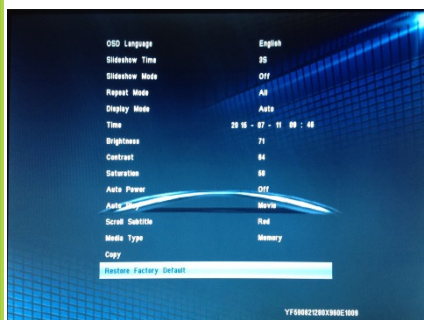
Create an empty folder on your memory stick and name it copy.txt – Do not store any files in this folder.

Switch on the machine and insert your USB stick into the USB port on the right side of the photo frame as shown in FIG 9.

Do not put the USB stick into the same place that you would use to upload the machine Audit, as this has no effect on the photo frame at all.



USB stick file structure showing a USB stick (E:) with the video files in the root directory and a folder named copy.txt.

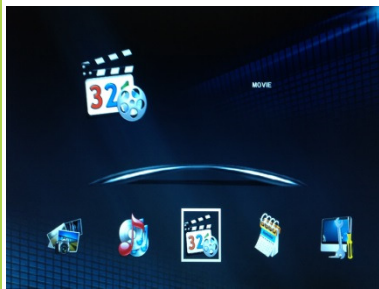


Select SETUP on the photo frame using the remote control and using the up / down buttons select COPY and press OK.

The photo frame will show a progress bar and will copy all the files in the root of your USB stick onto the photo frame.



Deleting Files

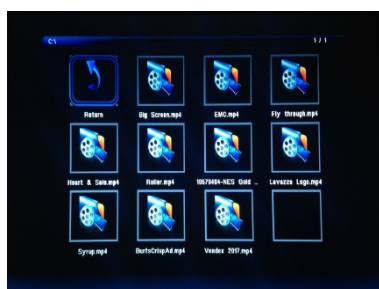


If the screen adverts are running press the STOP button (See page 13) the screen will show you the initial top level menu icons as shown.

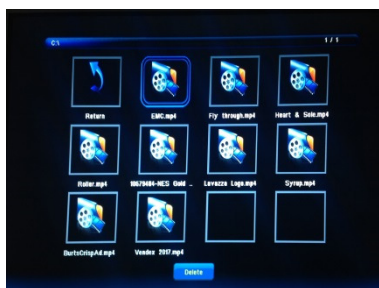
Press left or right until MOVIE or PHOTO is highlighted depending on the file type you want to delete then press the OK button.



You select either the USB , built in RAM or the SD card memory option and press OK then enter the thumbnail mode



When in thumbnail mode , use the arrows to select the file you wish to delete and press the DELETE button on the remote control (See page 13).



Press the OK button to confirm the file to be deleted.

Repeat this process for all other files you want to delete.

Alternatively you can connect the device to a computer using the Mini USB port and transfer or delete files by using the computer.



Scrolling subtitles

The scrolling subtitle feature supports all video and photo modes by using a text (.TXT) file. This is a type of file that allows the device to read and display text. You can download these from a wide variety of sources on the internet or you can create your own to display important information or drink prices.

- Create a .TXT file by using one of many readily available software on a variety of platforms and save the file with the filename SCROLL.TXT
- Copy this file on to a USB stick in the root directory.
- Insert the memory stick into the photo frame USB port.
- Select SETUP from the main menu.
- Use the UP/DOWN arrows to go down to SCROLL SUBTITLE and use the LEFT/RIGHT arrows to select the text colour.
- When you next run a video or photo slide show the SCROLL.TXT file will run at the bottom of the screen.



Westomatic Vending Services Ltd
Units 7- 8 Forde Court, Forde Road
Newton Abbot, Devon
United Kingdom TQ12 4BT

Tel: +44 (0)1626 323100 Fax: +44 (0)1626 369400 sales@westomatic.com www.westomatic.com

Registered office: Units 7-8 Forde Court, Forde Road, Newton Abbot, Devon TQ12 4BT United Kingdom. V.A.T. No. GB 730 3728 52
Registered in England 873813, Directors: R J S Brinsley (Chairman/Managing) Ashley Rote (Company Secretary)