



EVOLVE

FUEL YOUR BODY

REPLACE SCREEN FASCIA

westomatic
make it happen

REPLACE SCREEN FASCIA



Equipment Needed:

- 7mm Hex Socket Wrench
- Phillips screwdriver

6 DOOR LOOM / EARTH WIRE

FLUSH COVER

5

3 LCD SCREEN COVER

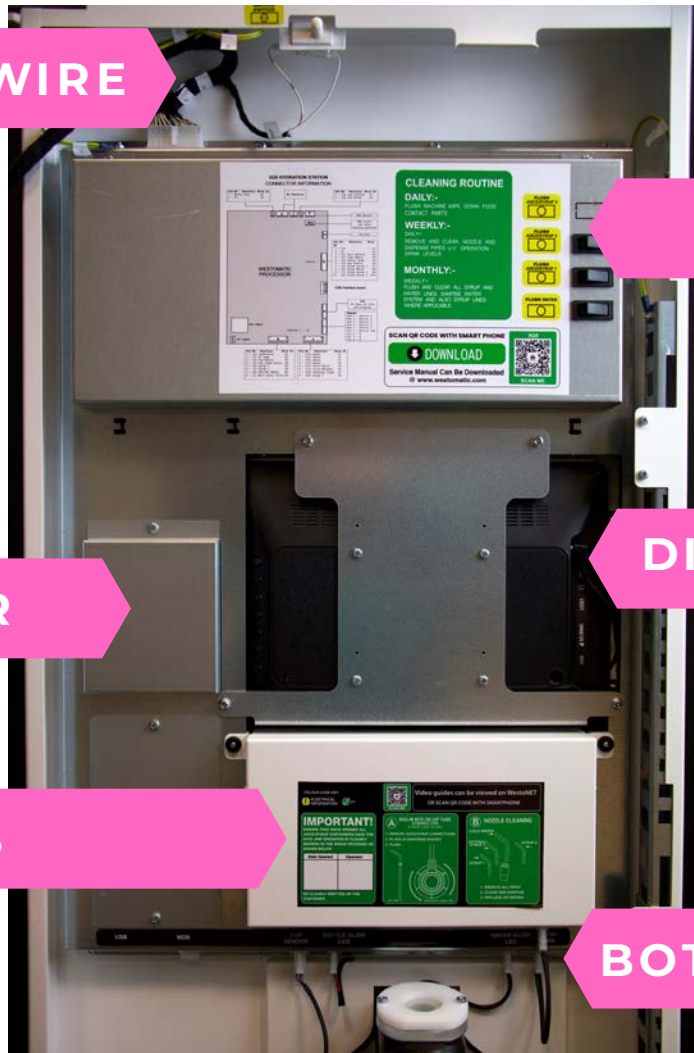
DIGITAL MEDIA SCREEN

4

2 LIGHTBOX / DECALS

BOTTLE STATION LOOMS

1



1 - REMOVE LIGHTBOX



Unscrew washers →

Remove menu
LED loom

Remove Lightbox →



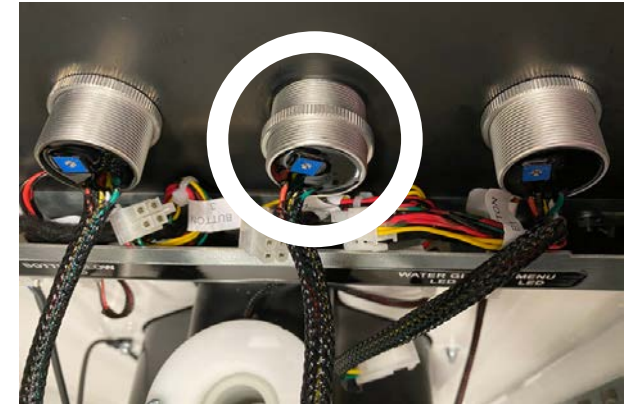
2 - REMOVE BUTTONS



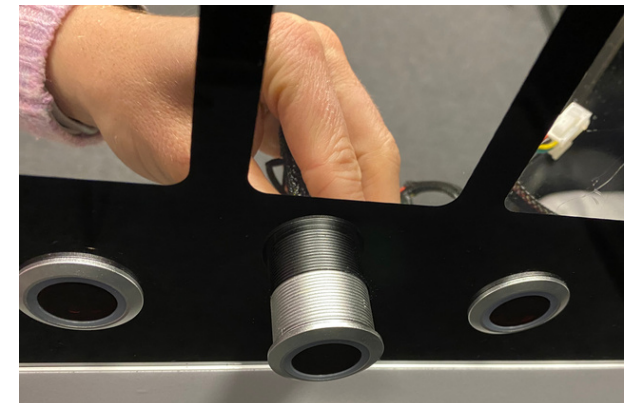
Disconnect Looms x 4



Unscrew Washer x 4



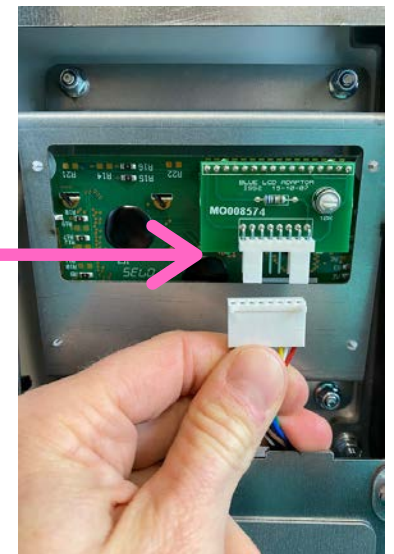
Remove Button
from Front



3 - REMOVE LCD COVER



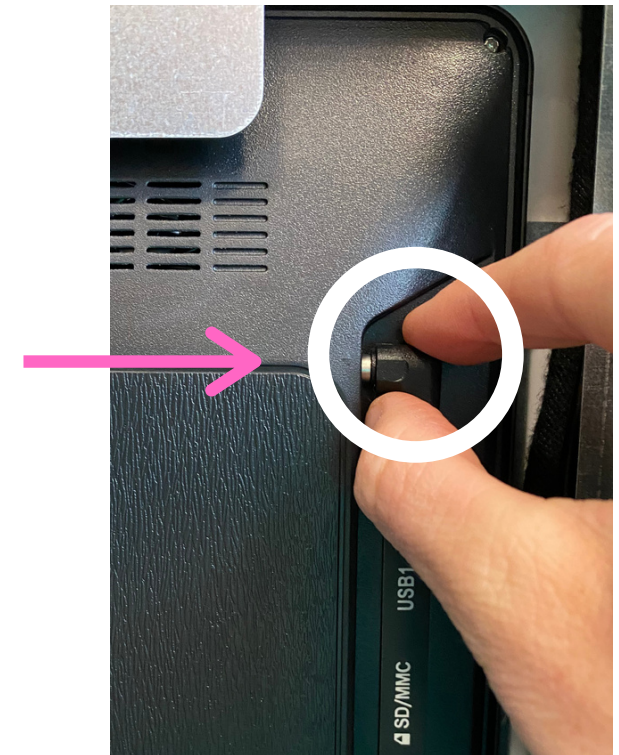
Remove Cover and
disconnect Loom



4 - UNPLUG DIGITAL MEDIA SCREEN



Unplug power cable
from digital media
screen



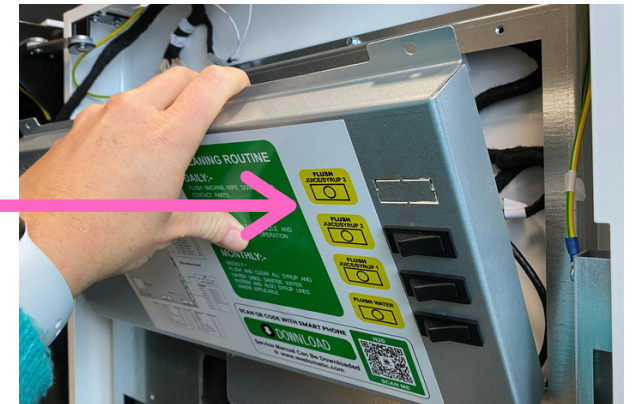
5 - REMOVE FLUSH COVER



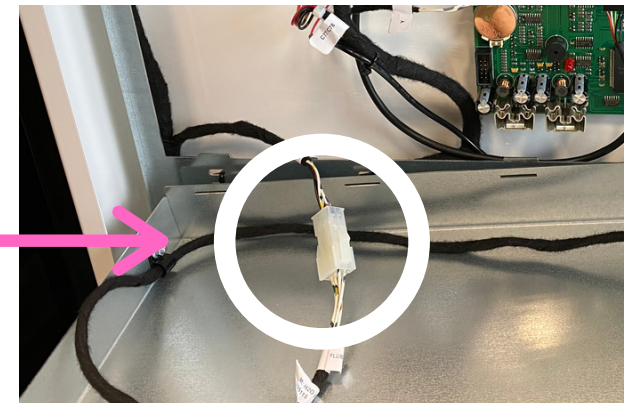
Unscrew Cover



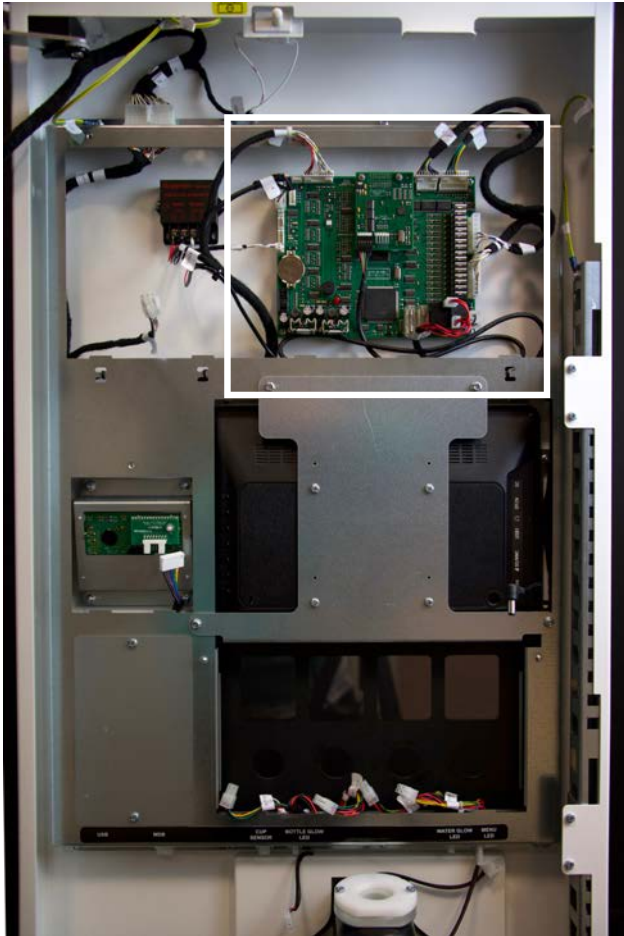
Remove Cover



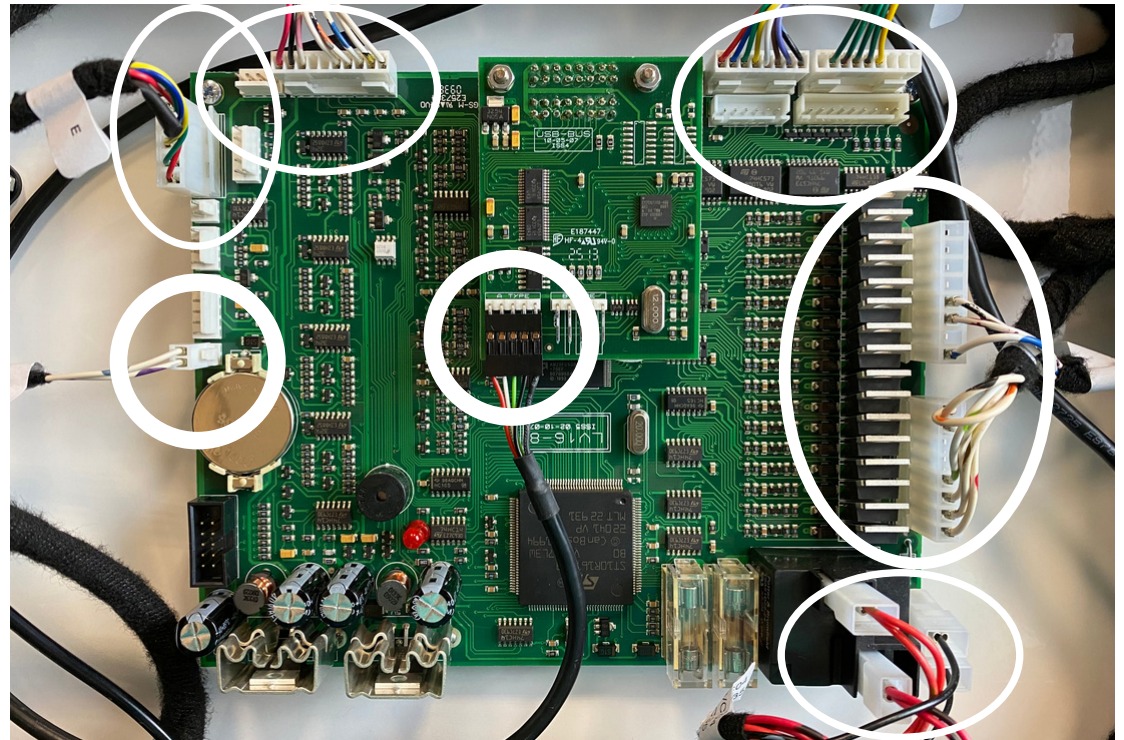
Unplug Loom



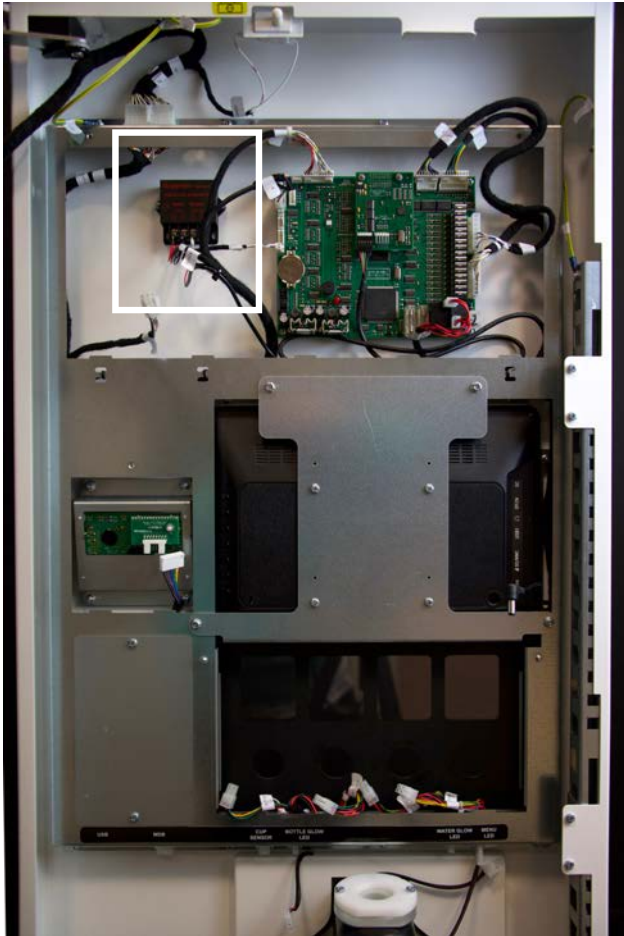
6 - UNPLUG MAIN BOARD



Disconnect looms as shown



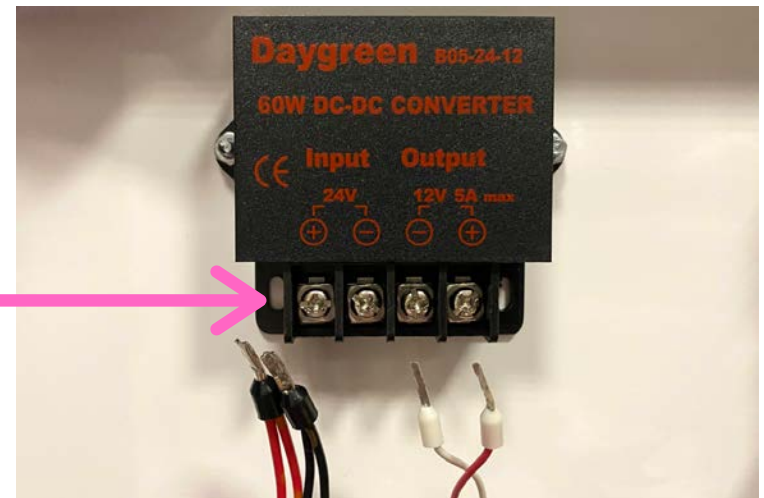
7 - DISCONNECT CONVERTOR



Loosen screws



Remove
connectors



8 - UNPLUG FRAME



Unplug Loom



Remove Earth Cable



Unplug Looms



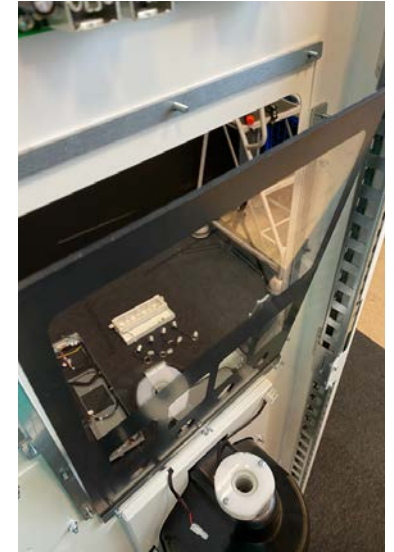
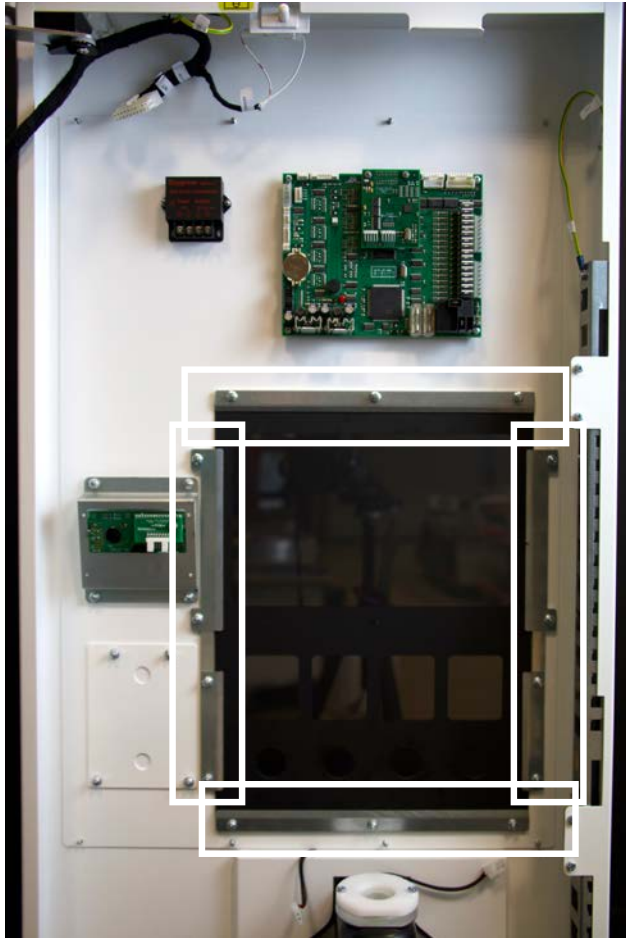
9 - REMOVE METAL FRAME



Remove Frame
Bolts



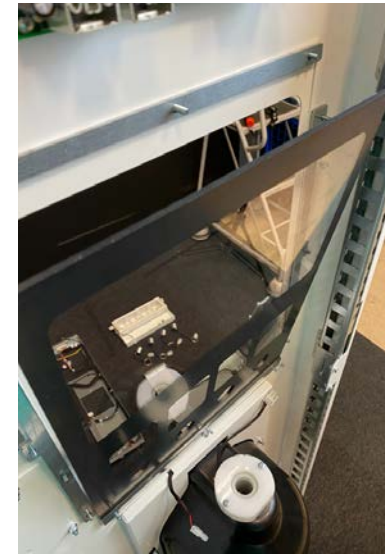
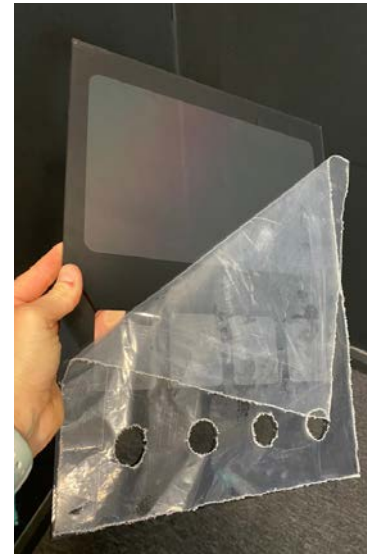
10 - UNBOLT SCREEN PACKERS



Unbolt Screen
Packer and
remove - loosen
middle bottom
bolt but leave
in place



11 - REPLACE FASCIA



- Remove plastic from back and front (keep front plastic)
- Slide fascia between bottom screen packer - bolt back in
- Replace all screen packers and bolt back into place

12 - REPLACE METAL FRAME



Replace Frame
Bolts -
ensure all looms
are free of frame



13 - REPLACE DOOR CABLES



Plug in Loom



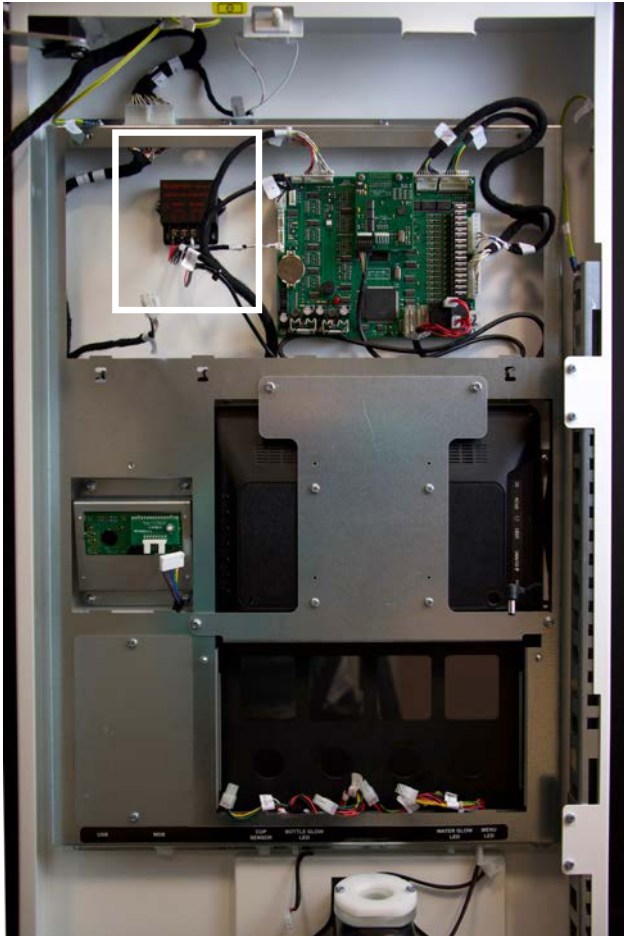
Reattach Earth Cable



Plug Looms back into frame



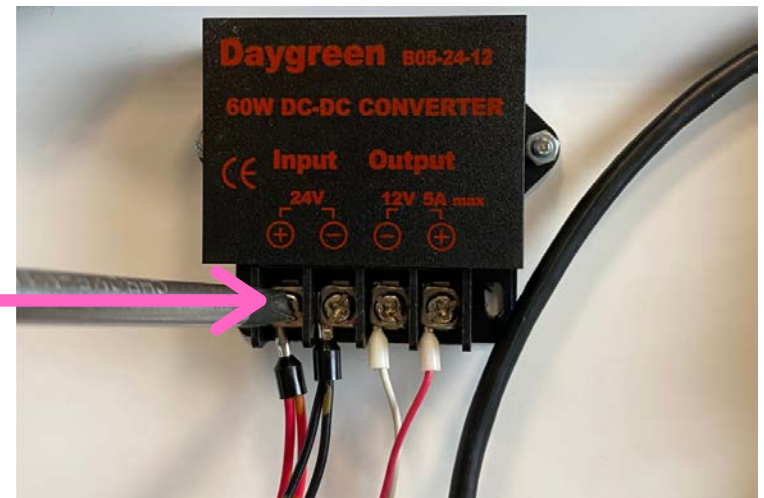
14- RECONNECT CONVERTOR



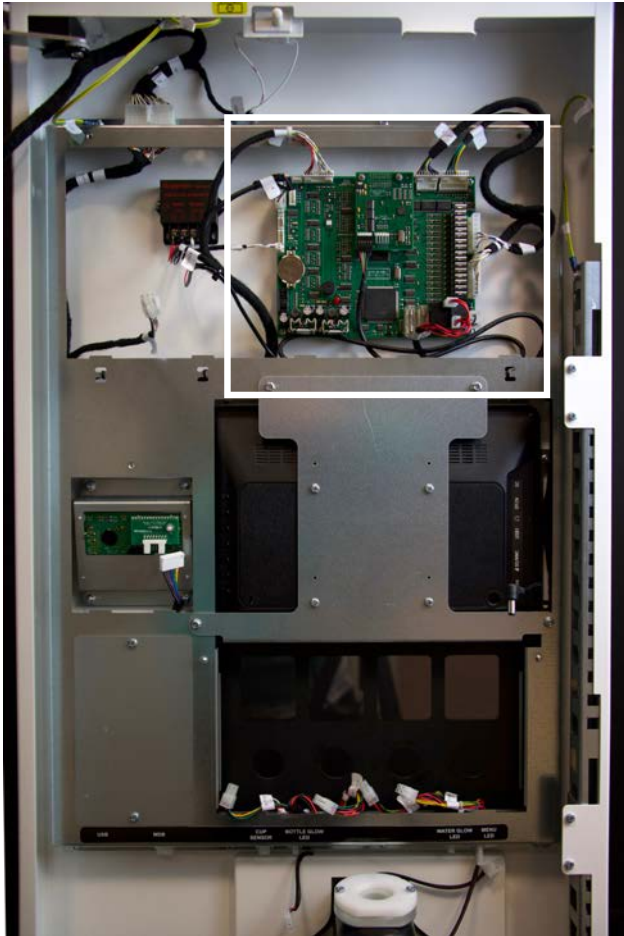
Attach Connectors



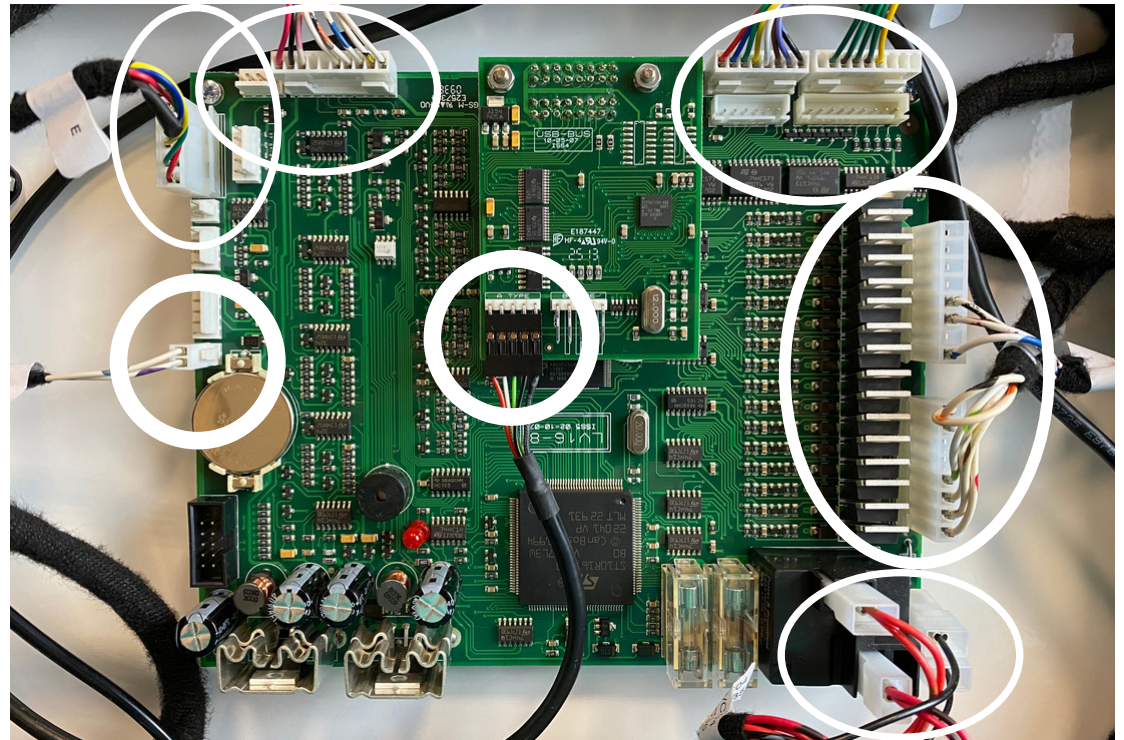
Tighten Screws



15 - PLUG MAIN BOARD IN



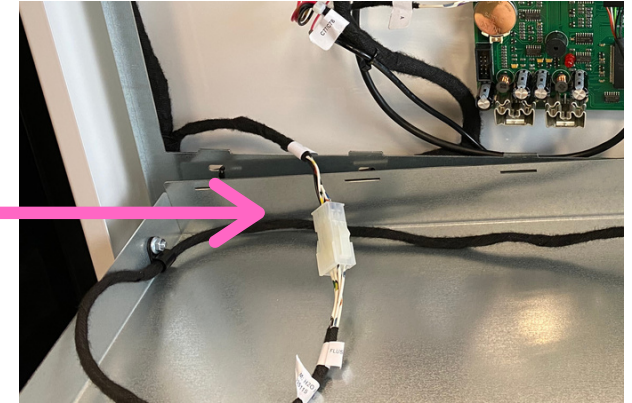
Connect looms as shown



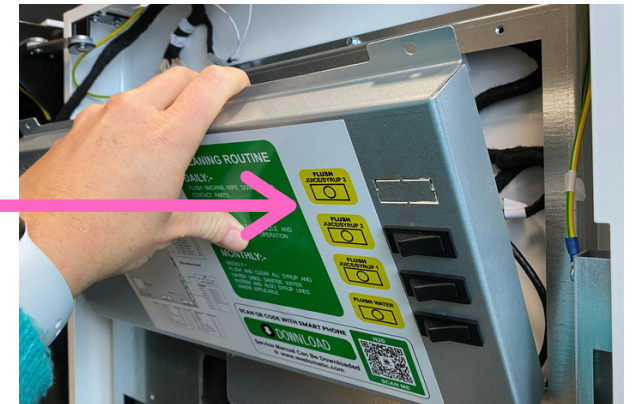
16 - REPLACE FLUSH COVER



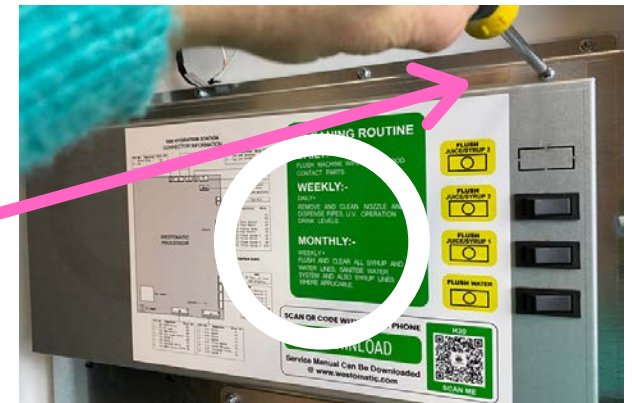
Attach Loom



Replace Cover



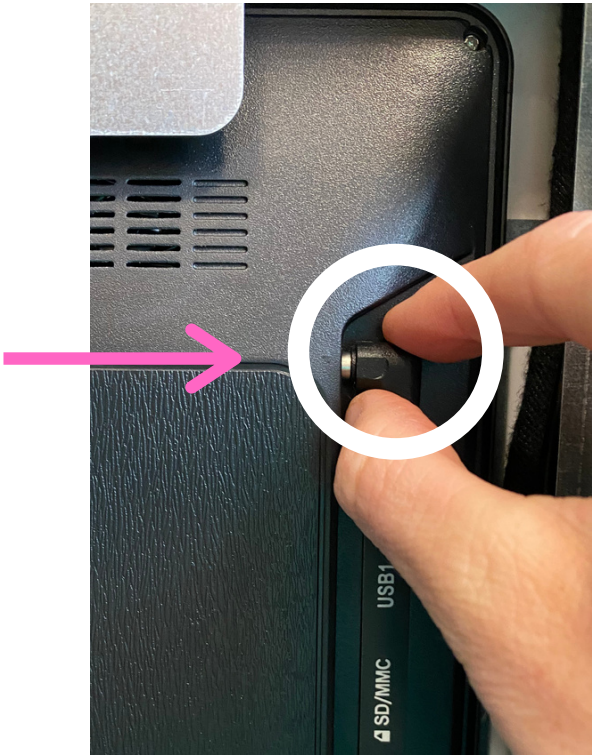
Replace Screws



17 - PLUG IN DIGITAL MEDIA SCREEN



Plug in power cable
from digital media
screen



18 - REPLACE LCD COVER



Connect Loom and
replace cover

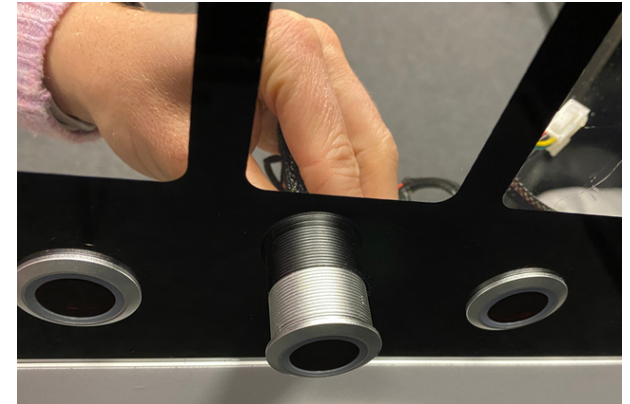
19 - REPLACE BUTTONS



Replace button
from front

Screw Washers on x 4

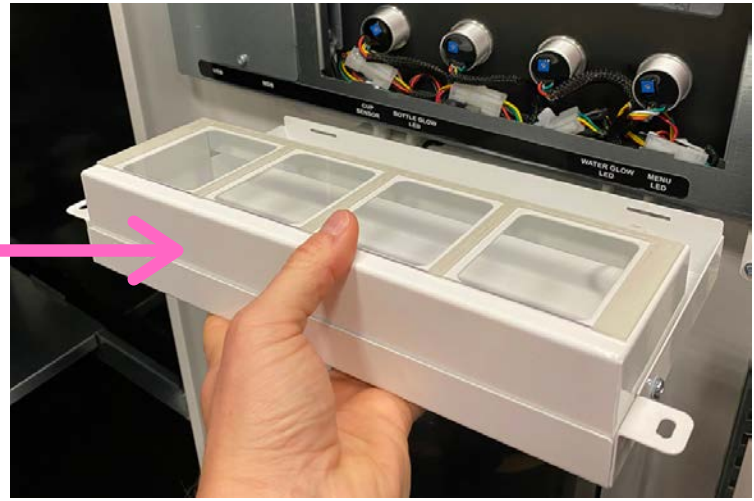
Reconnect Looms x 4



20- REPLACE LIGHTBOX



Replace Lightbox



Screw washers on



Replace menu LED loom

REFUEL. RECOVER. REPEAT.



CONTACT



Westomatic Vending
Services Ltd,
Units 7 - 8 Forde Court,
Block 4 Forde Road,
Newton Abbot,
TQ12 4BT



+44 (0)1626 323100



sales@westomatic.com



www.westomatic.com

