

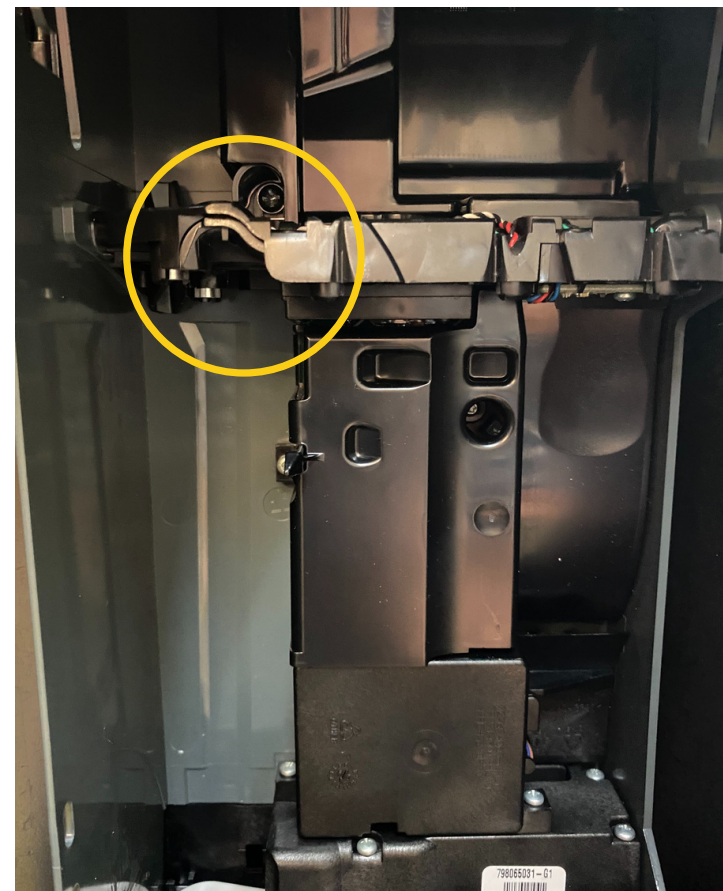
EASY 6000

COIN MECH



Fitting the Coin Mech





To fit the coin mech:

- **Slacken the pre-fitted screws as shown.**
- **The coin mech is located next to the main board.**
- **Place the coin mech into place – secure by tightening the screws.**

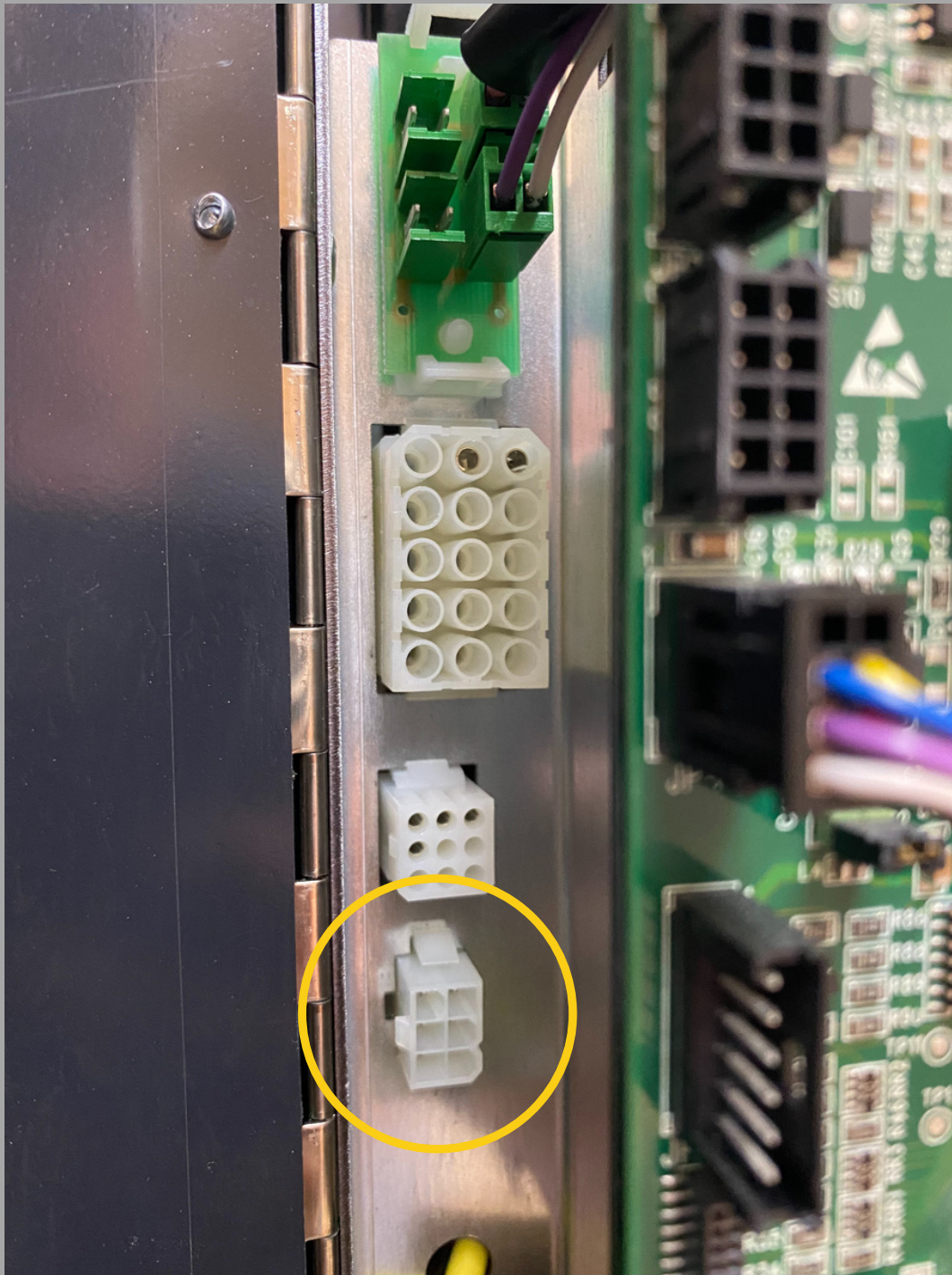


To fit the cassette:

- **Replace the mechanism and ensure the coin chute is correctly positioned.**
- **Make sure the yellow clip is clicked into place.**
- **Replace the coin cassette.**

Connecting the Coin Mech





To connect coin mech:

- Switch off the machine
- Connect the mechanism to the machine.
- If there is a card reader fitted use the splitter.
- Finally check the mech lines up with the coin chutes, and that the machine connects up.

Filling the Coin Mech

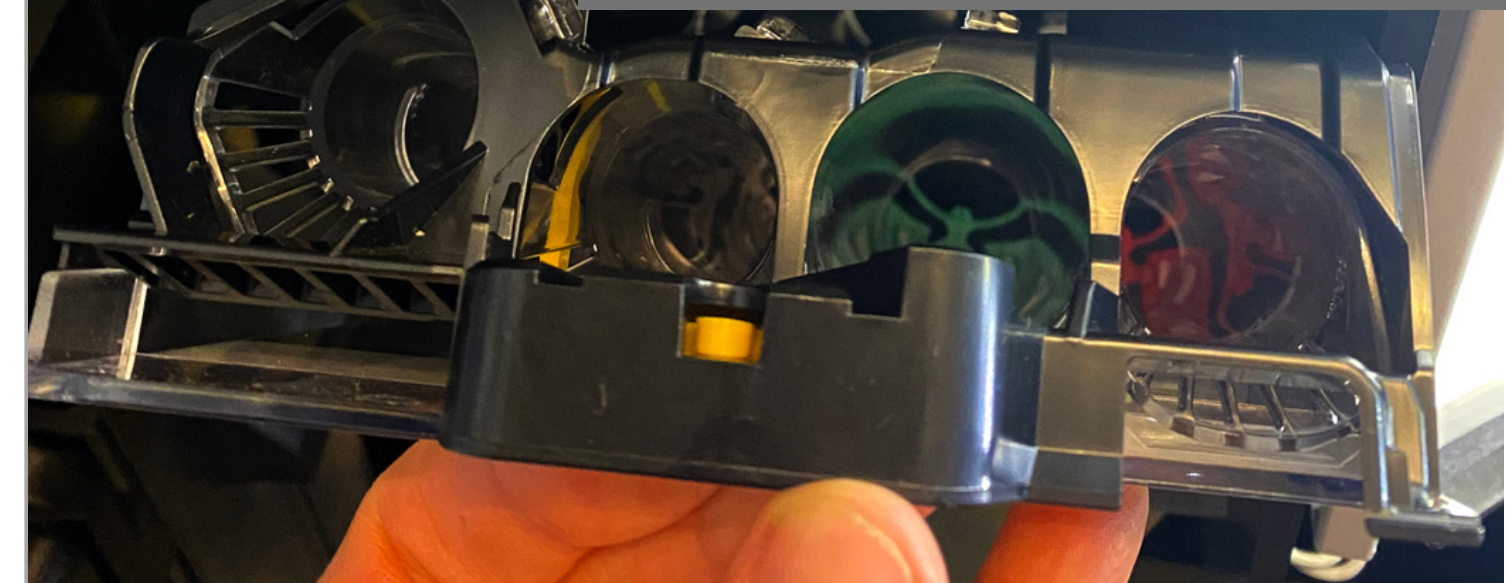




Push up to remove
coin cassette



Fill and check for
blockages –then
replace cassette
into mech





**Coin Mech
automatically counts
and sets fill quantity**



**Press Yellow Button
twice to clear any
blockages**

EASY 6000

