



HYDRATION STATION

FITTING PLINTHS



westomatic
make it happen

FITTING PLINTHS



Equipment Needed:

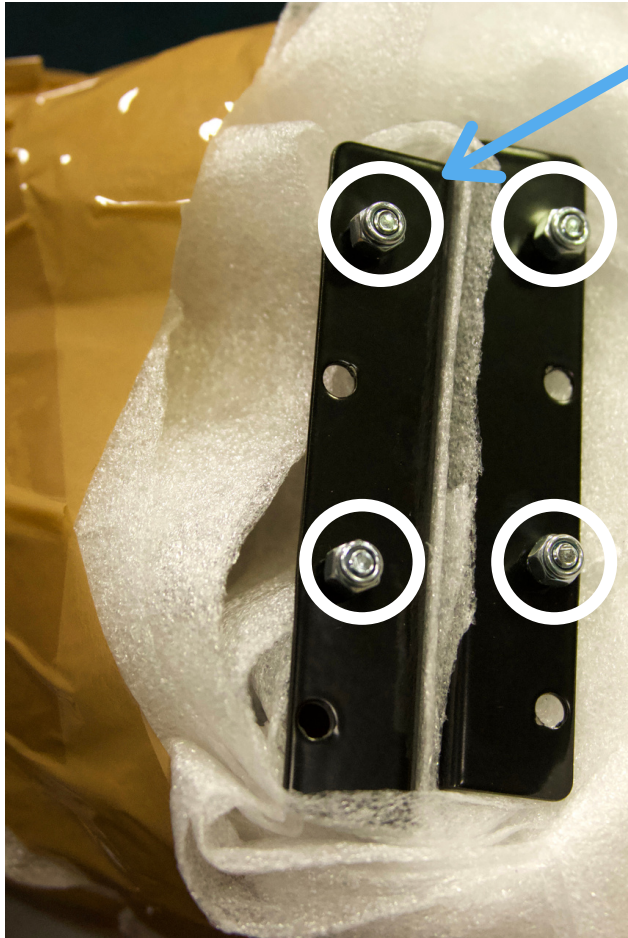
- 8mm Hex Socket Wrench
- Phillips screwdriver

INSIDE THE MACHINE

PLINTHS



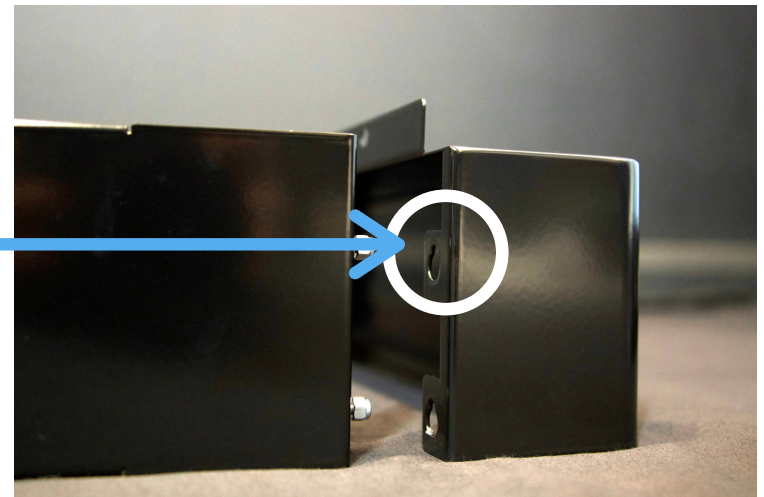
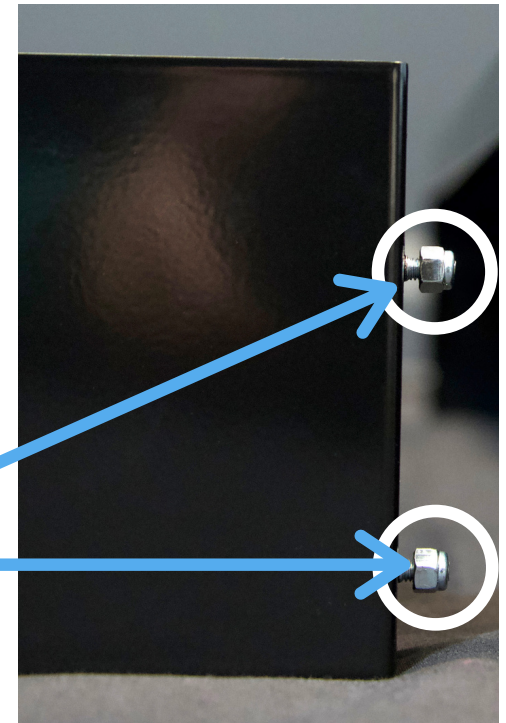
1 - UNPACK PLINTHS



Plinths will have bolts fitted

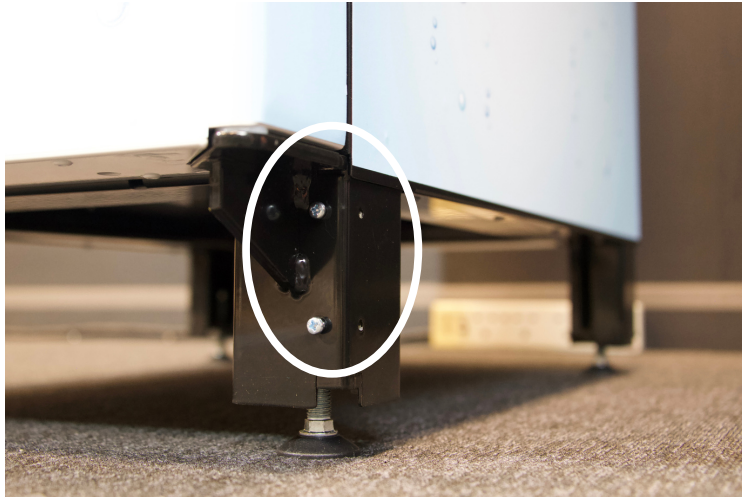
The bolts must be located closer to the bottom when fitting

The bolts fit into a keyhole connection with the front plinth



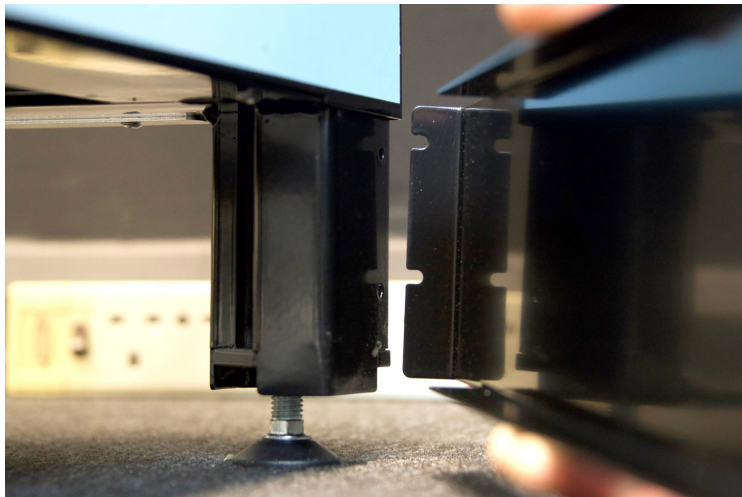
2 - FIT SIDE PLINTHS

1



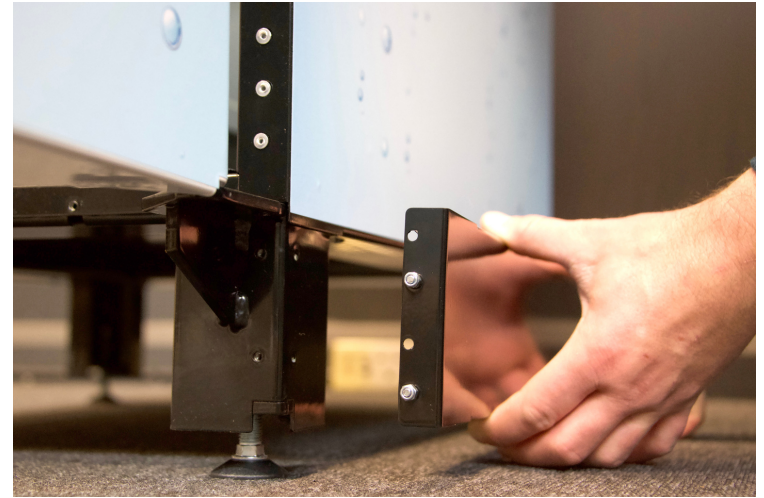
Remove screws

2



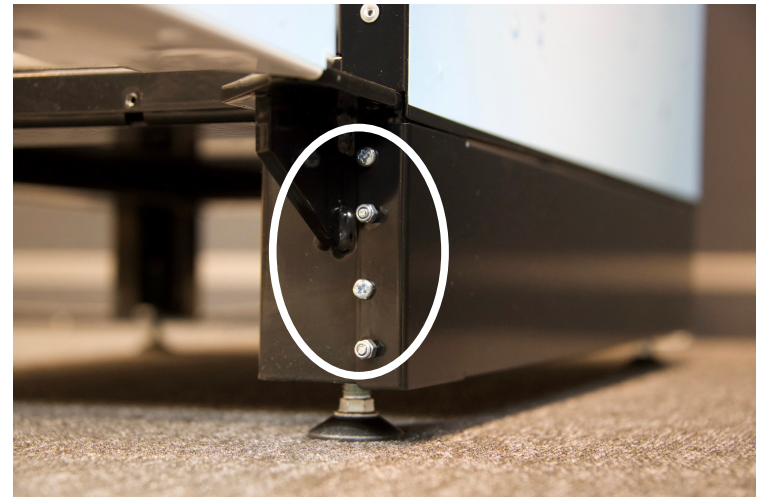
Slide plinth into back
of machine first

3



Fit plinth to front

4



Replace screws

5

Repeat steps on other side

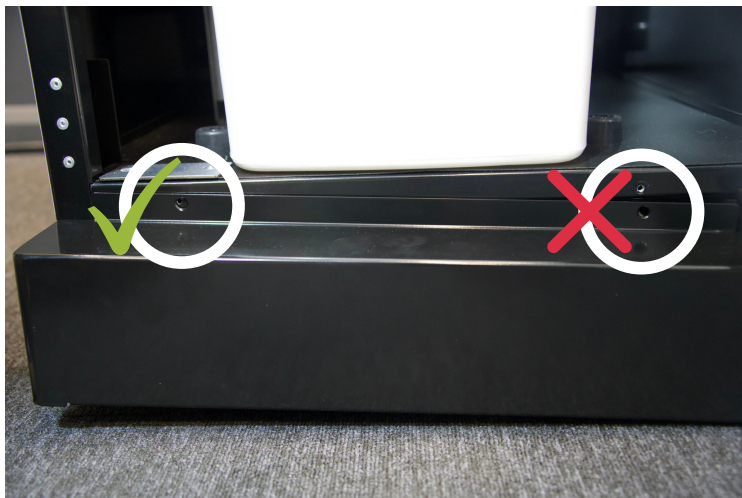
3 - FIT FRONT PLINTH

1



Remove countersink
screws x2

2



Ensure plinth and
countersink align

3



Replace screws x2

4



Plinths fitted on both
sides and front

Water

IS LIFE - DON'T WASTE IT



CONTACT



Westomatic Vending
Services Ltd,
Units 7 - 8 Forde Court,
Block 4 Forde Road,
Newton Abbot,
TQ12 4BT



+44 (0)1626 323100



sales@westomatic.com



www.westomatic.com