

primo

MAXI/TOUCH/4

CLEANING COFFEE GRINDER BLADES

westomatic
make it happen



CLEANING COFFEE GRINDER BLADES

These instructions show how to clean the coffee grinder if:

- It needs preventative maintenance (annually)
- Or if no ground coffee is being produced.

*The ground coffee in the outlet can unintentionally swell because of water splashing upwards when the piston is going down to start position after making a recipe.

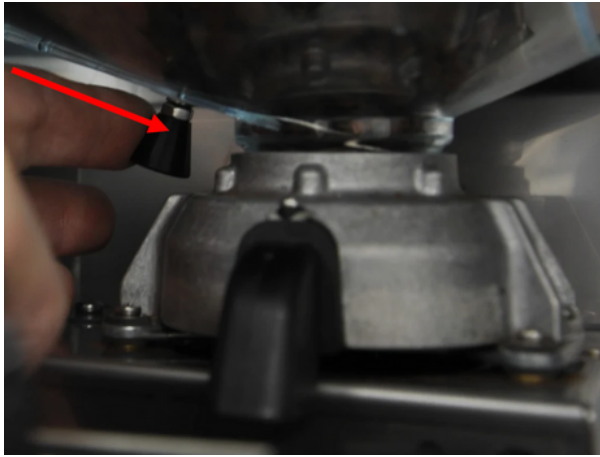
Check if there is any water visible above the piston when it has reached the rest position.

If so: take out the inlet-hose brewer on the front-side and blow on it: there should be an open connection with the rest water bin on top of the normal waste bin.



1

Turn off machine. Close the bean hopper slide moving to the right (downwards).



2

Remove the complete bean hopper from the machine.



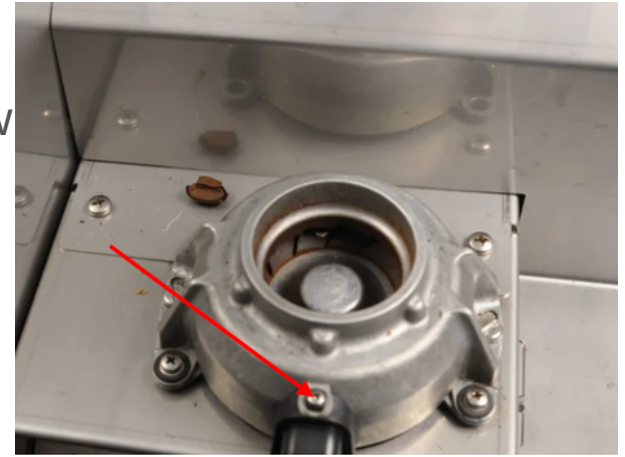
3

Using a vacuum - remove coffee beans from top of grinder.



4

Loosen the screw on the top. Take away plastic outlet, sliding upper part away from grinder.



5

Clean/Renew Grinder outlet.
PN:1057039.

*make sure plastic is not cracked



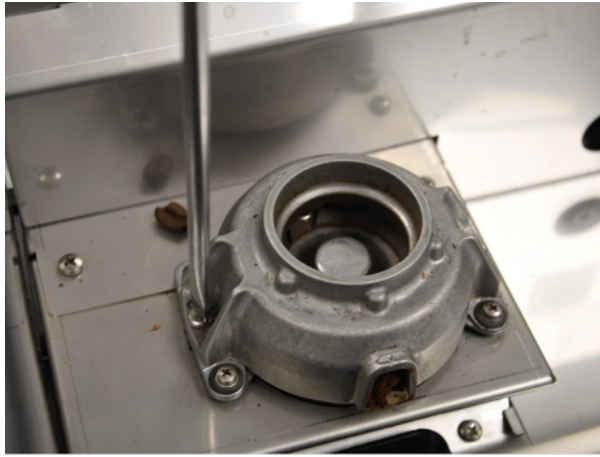
6

Unscrew both screws from the aluminium grinder head (L & R).



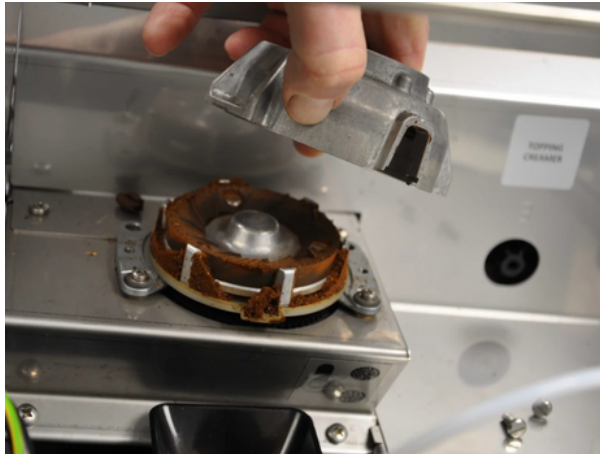
7

Take out the left screw.



8

Take away the upper aluminium (fixed disc) head of the grinder.



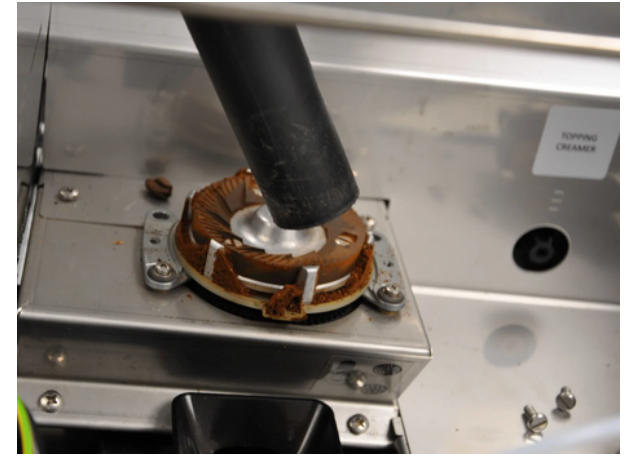
9

Clean the upper ceramic disc with a brush and vacuum cleaner.



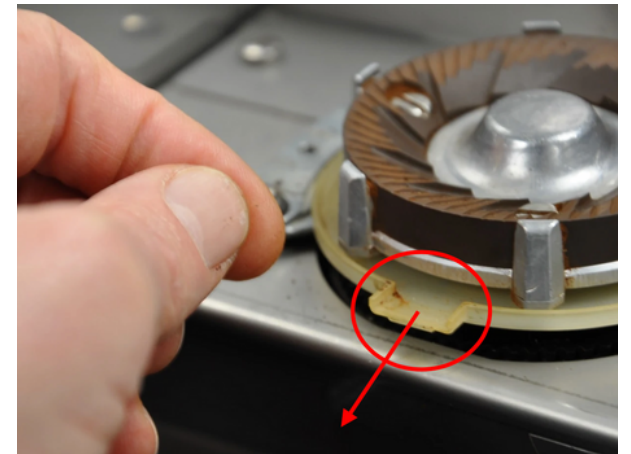
10

Clean the rotating disc - using a vacuum cleaner and the brush.



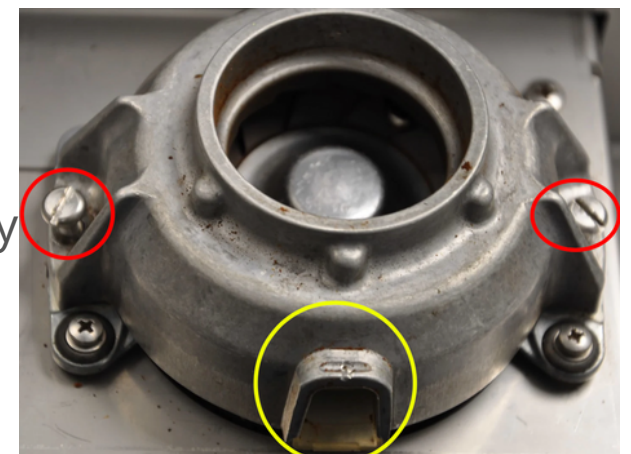
11

Ensure plastic grinder bottom is facing frontside of the machine.



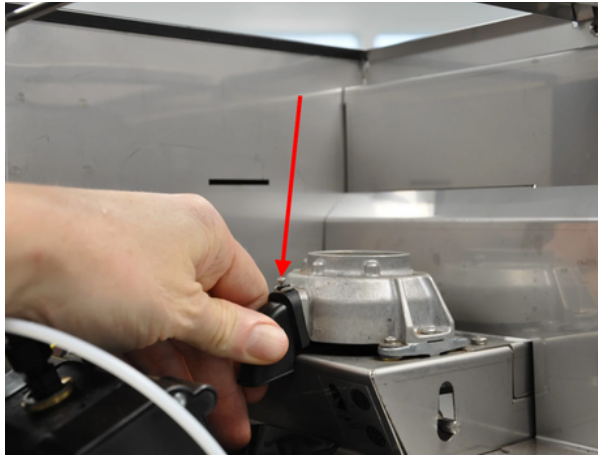
12

Fit head back, position correctly and replace screws.



13

Refit the grinder outlet - starting at the bottom and using gentle force.



14

Fit bean hopper back into machine, fill with beans and open bottom slide.



- Close the door.
- Switch on the machine
- Take 2-3 coffees - this fills up the grinder again.
- Check the 3rd drink for correct dosing time.





CONTACT



Westomatic Vending
Services Ltd,
Units 7 - 8 Forde Court,
Block 4 Forde Road,
Newton Abbot,
TQ12 4BT

primo



+44 (0)1626 323100



sales@westomatic.com



www.westomatic.com