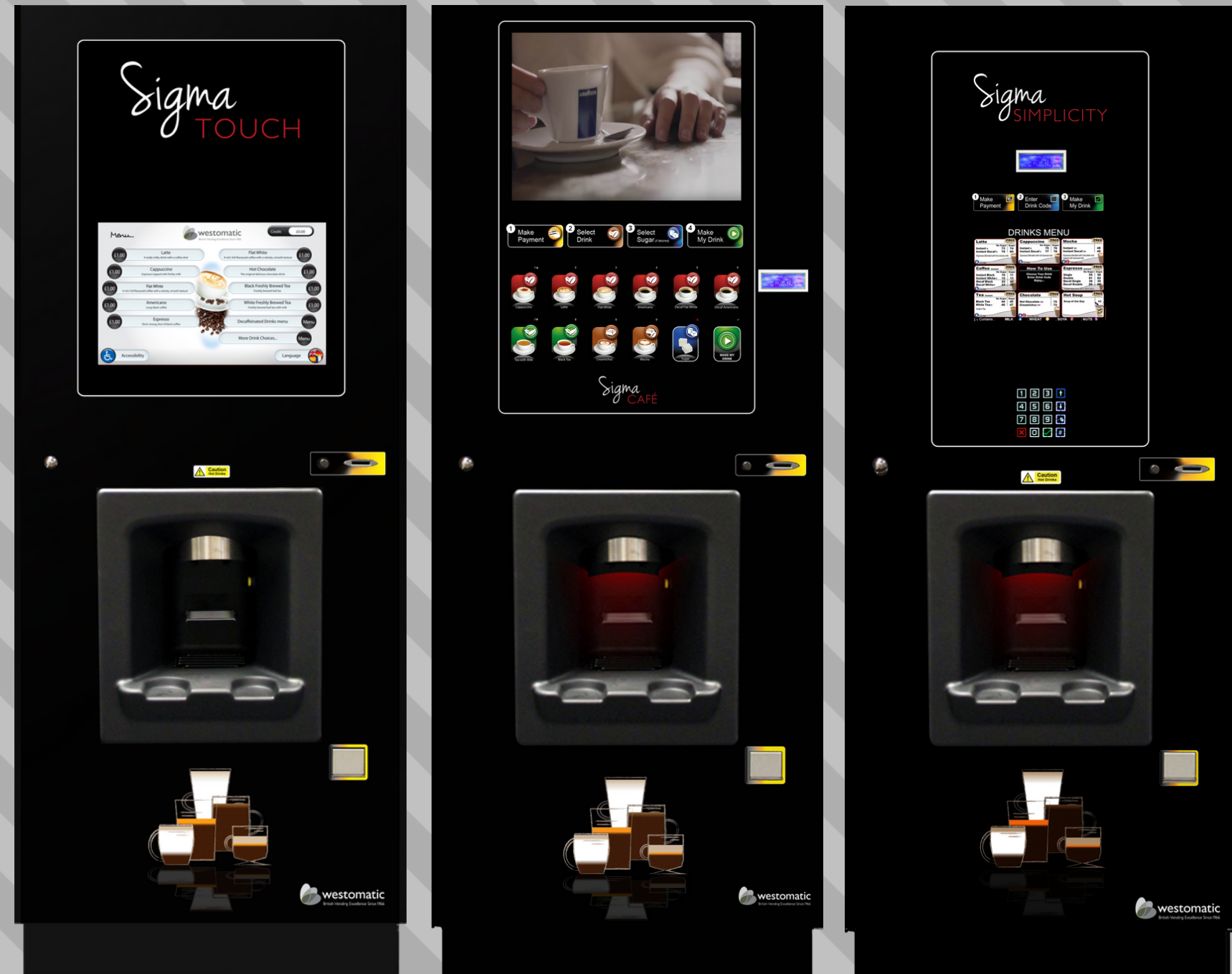


Sigma

FITTING A BREWER SERVICE KIT

LOW
PRESSURE
BREWER

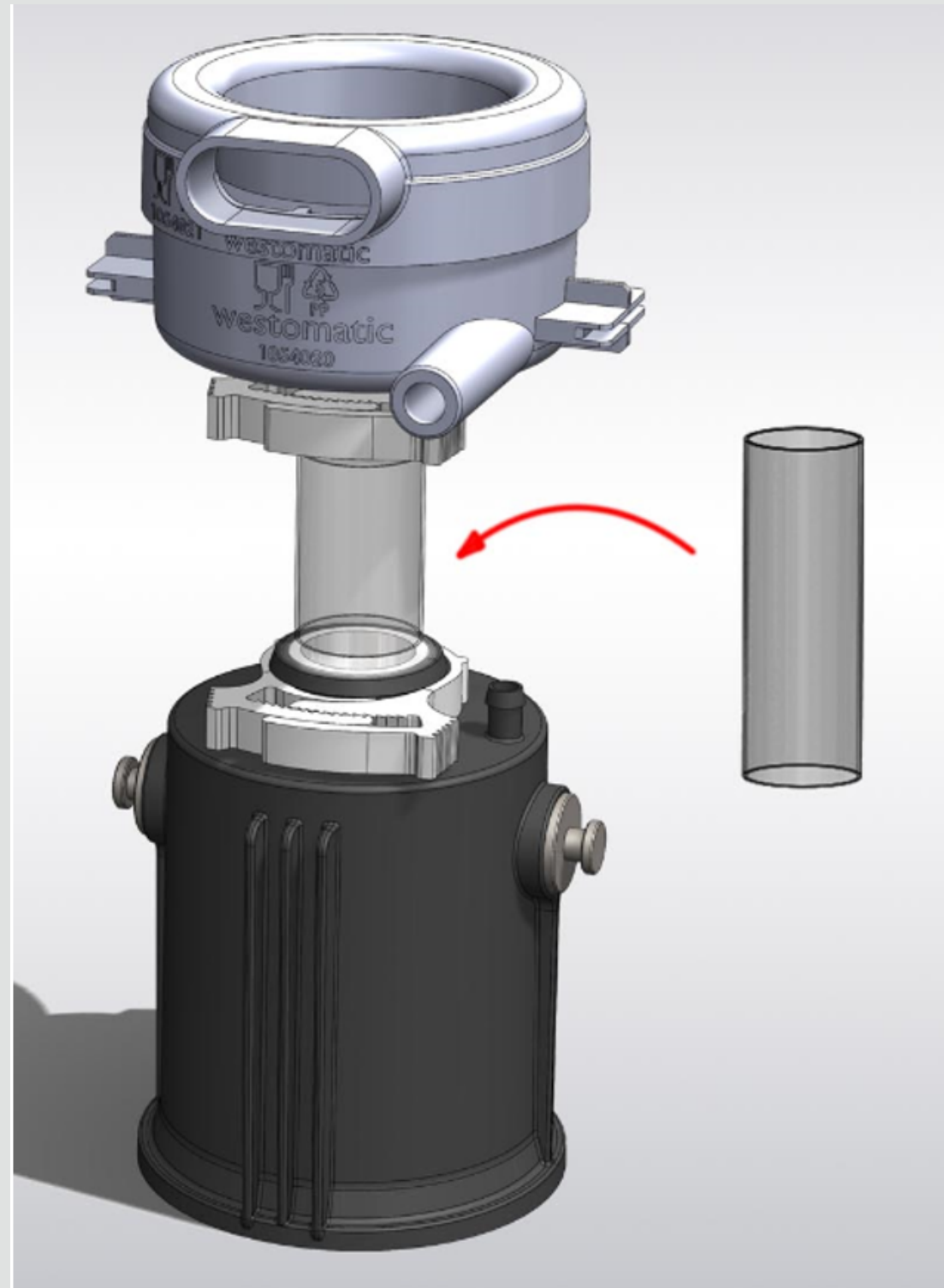


westomatic
make it happen

Fitting a Brewer Service Kit

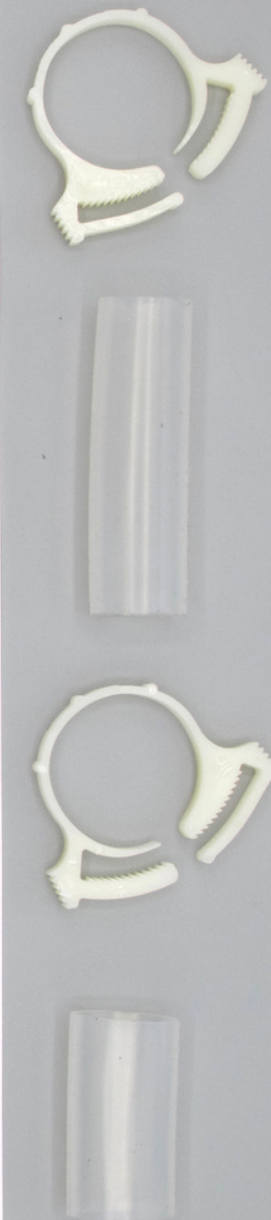
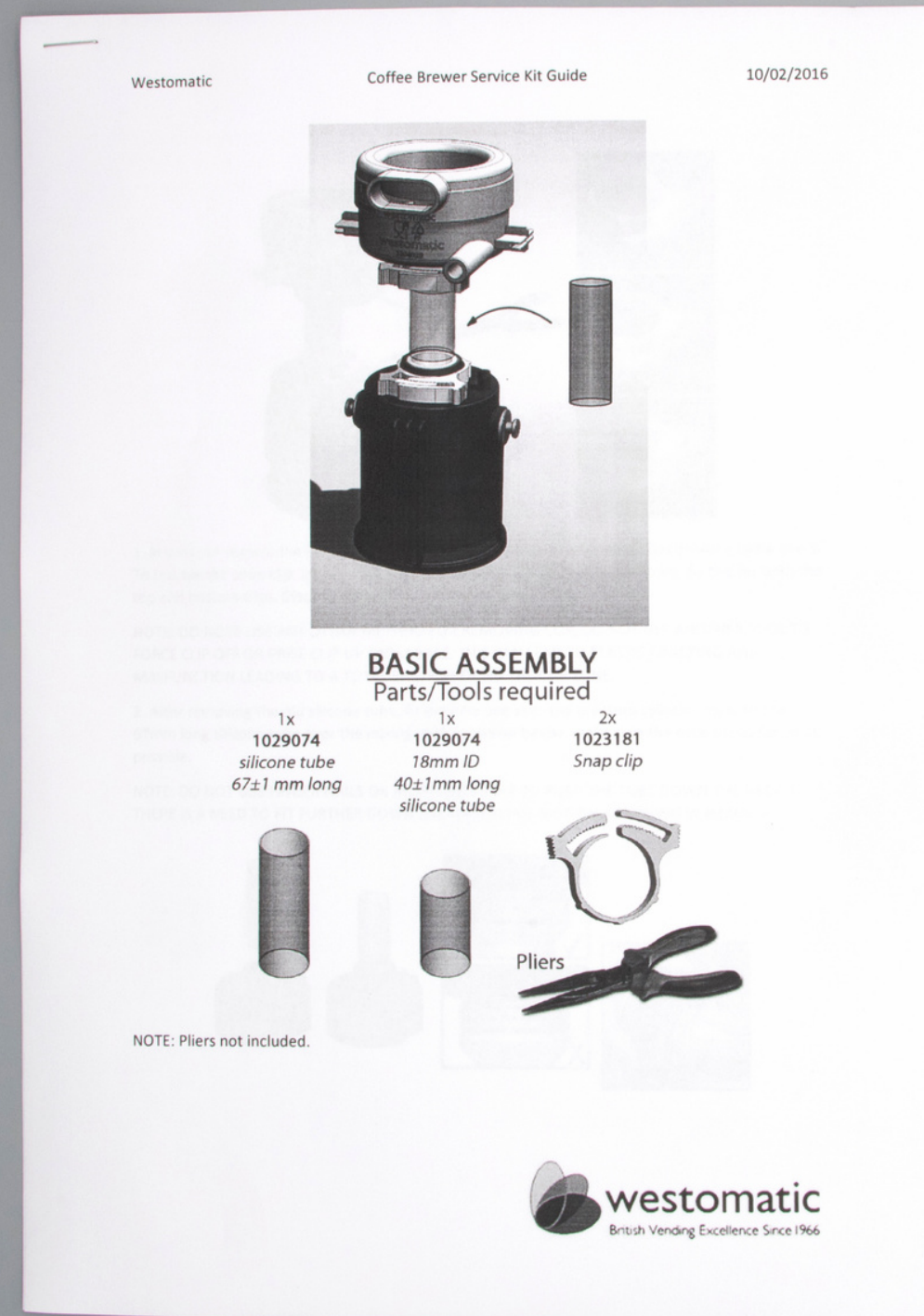


EQUIPMENT NEEDED:



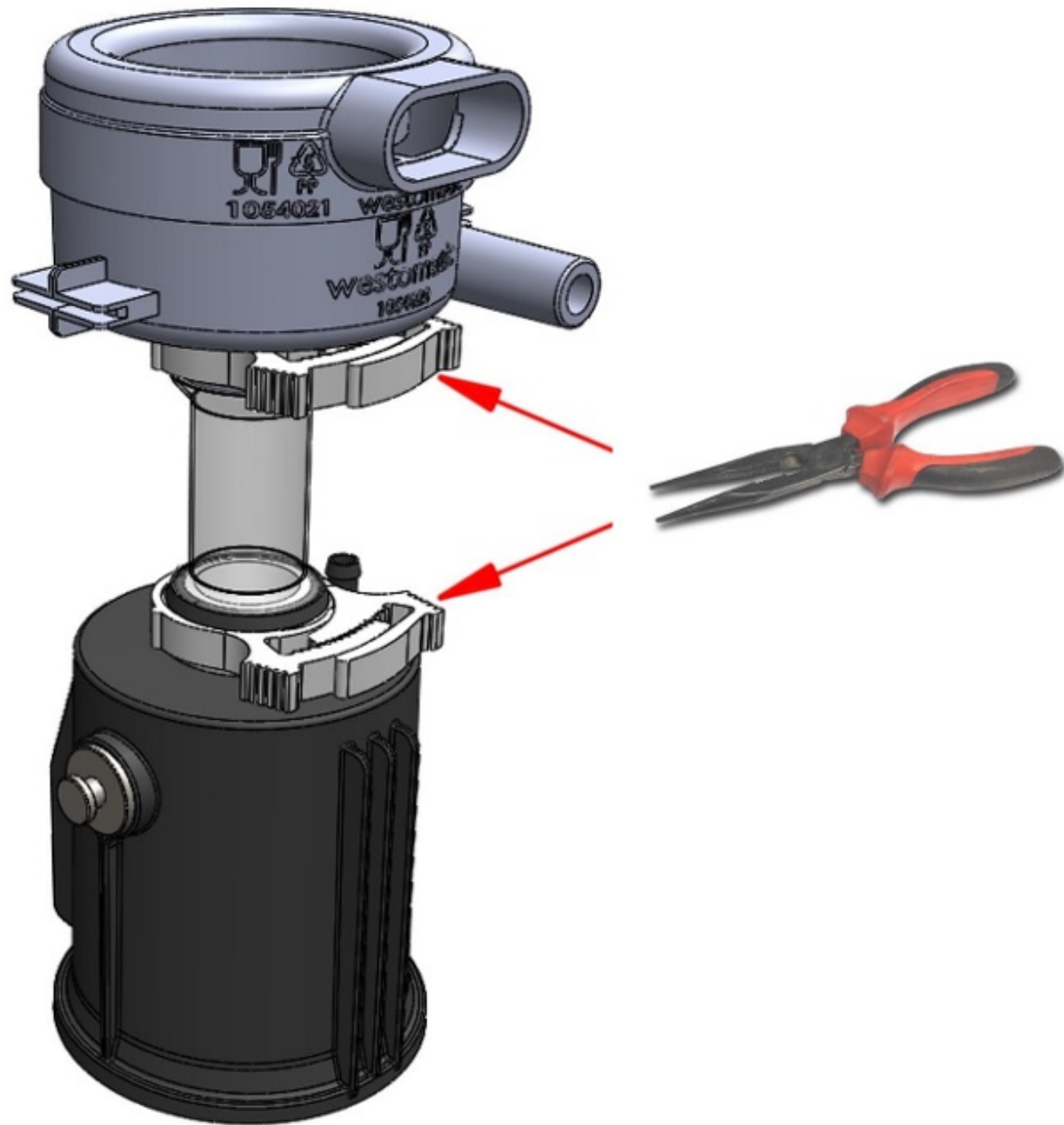
- **Long nose Pliers**





LPB Service Kit
PN: 2099506

1

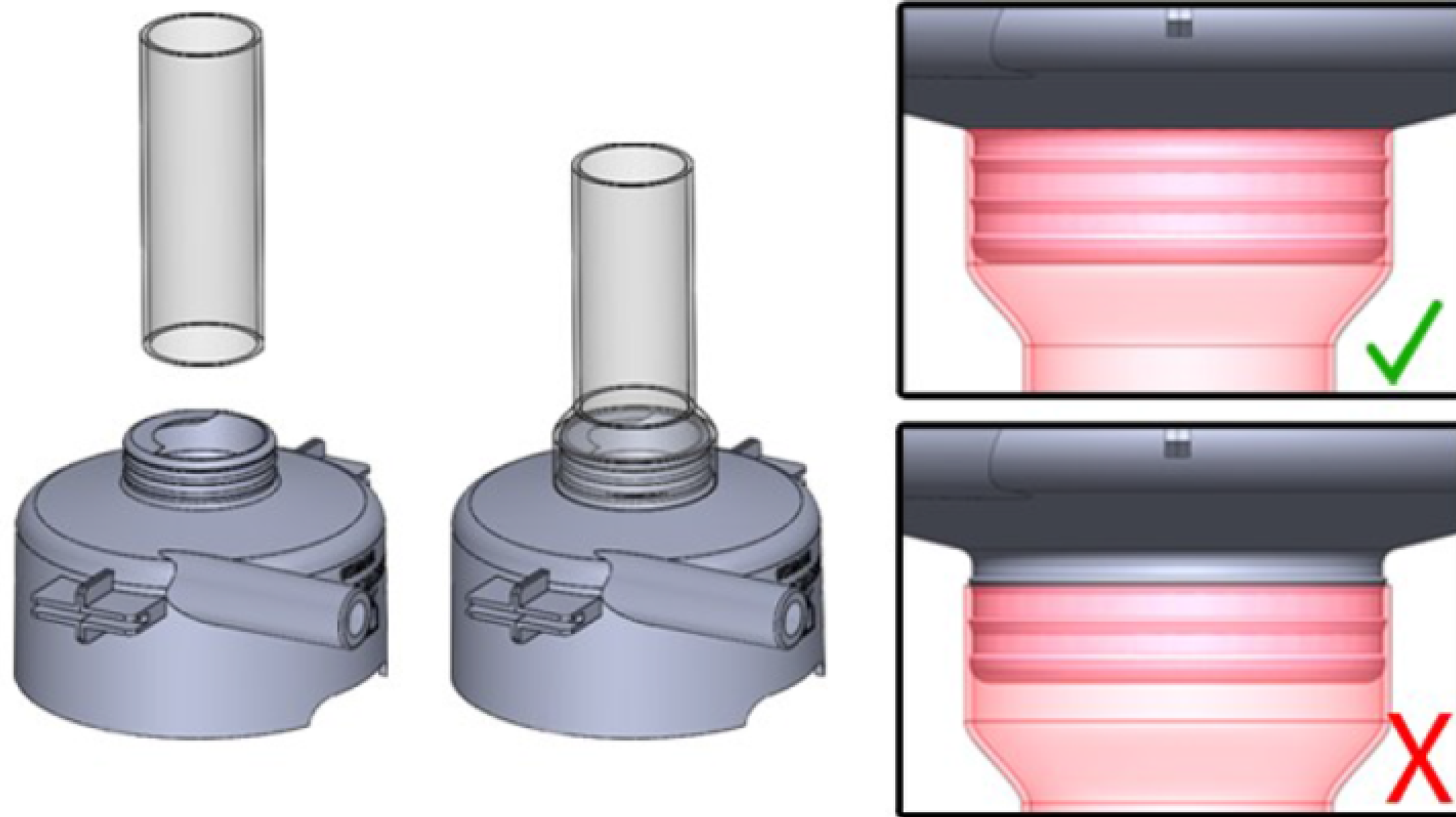


REMOVE SNAP CLIPS

1. To replace the silicone tube the snap clips must be removed
2. Use the pliers to lift up one of the sides of the clip - shown in 3
3. Repeat for top and bottom clips
4. Discard of the silicone tube

IMPORTANT: ONLY USE THIS METHOD TO REMOVE CLIPS – ENSURING PLASTIC DOES NOT SNAP & MALFUNCTION

2



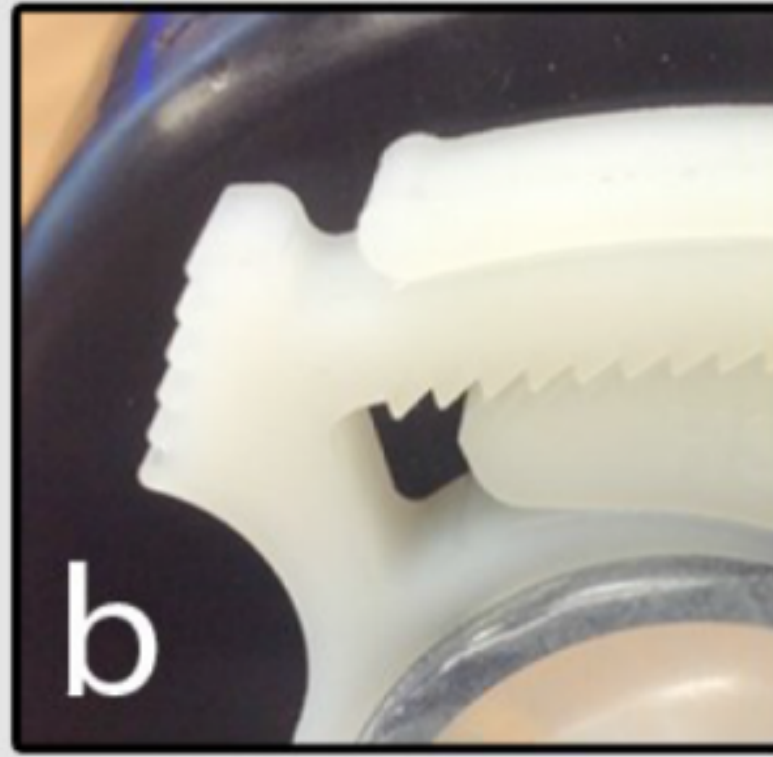
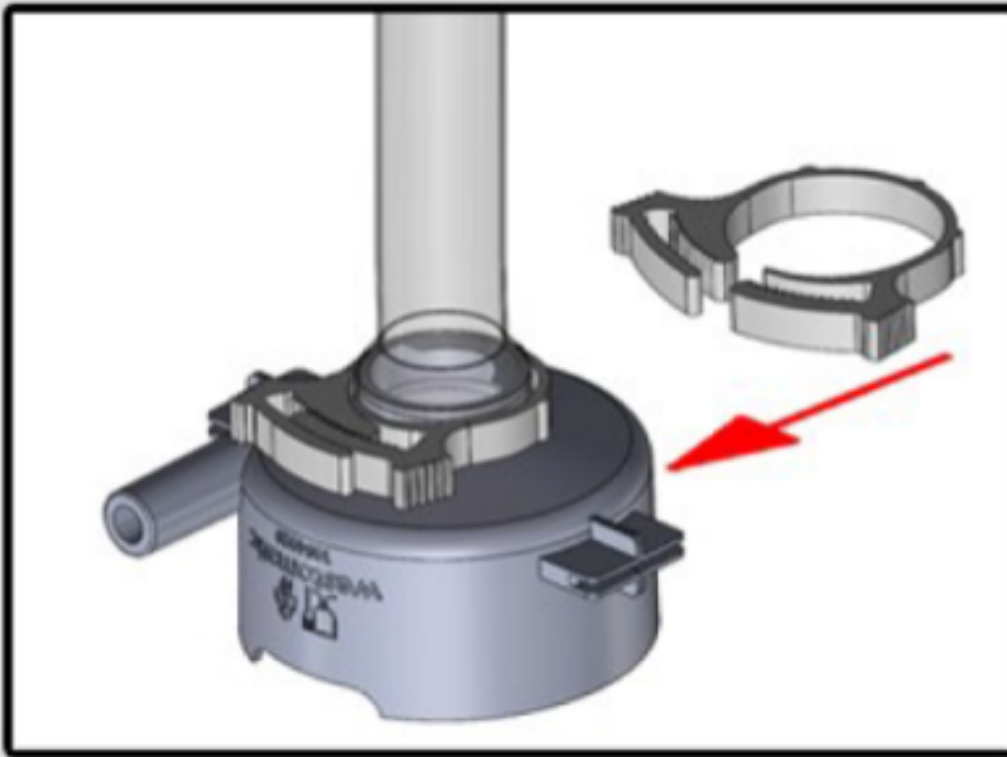
FIT LONGER (67mm) SILICONE TUBE

- 1. Fit tube over the mixing bowl neck**
- 2. Ensure tube sits up as far as possible**
- 3. Use a twisting motion to ensure a good fit**



**IMPORTANT: DO NOT USE ANYTHING
SHARP THAT MAY PIERCE THE TUBE**

3

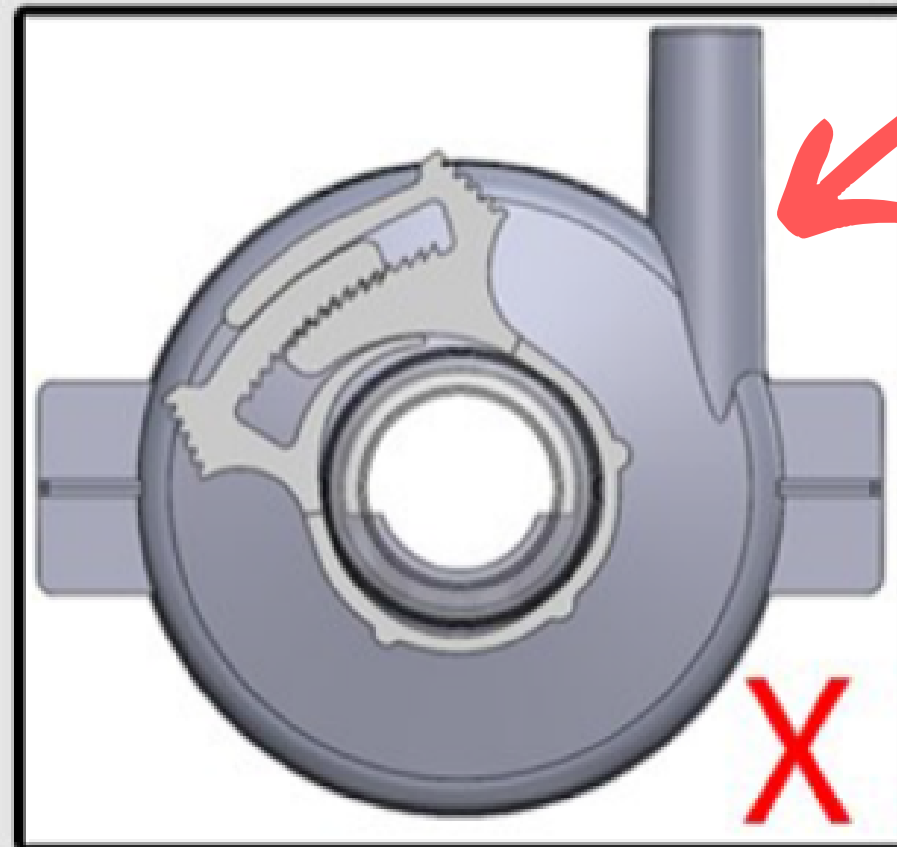
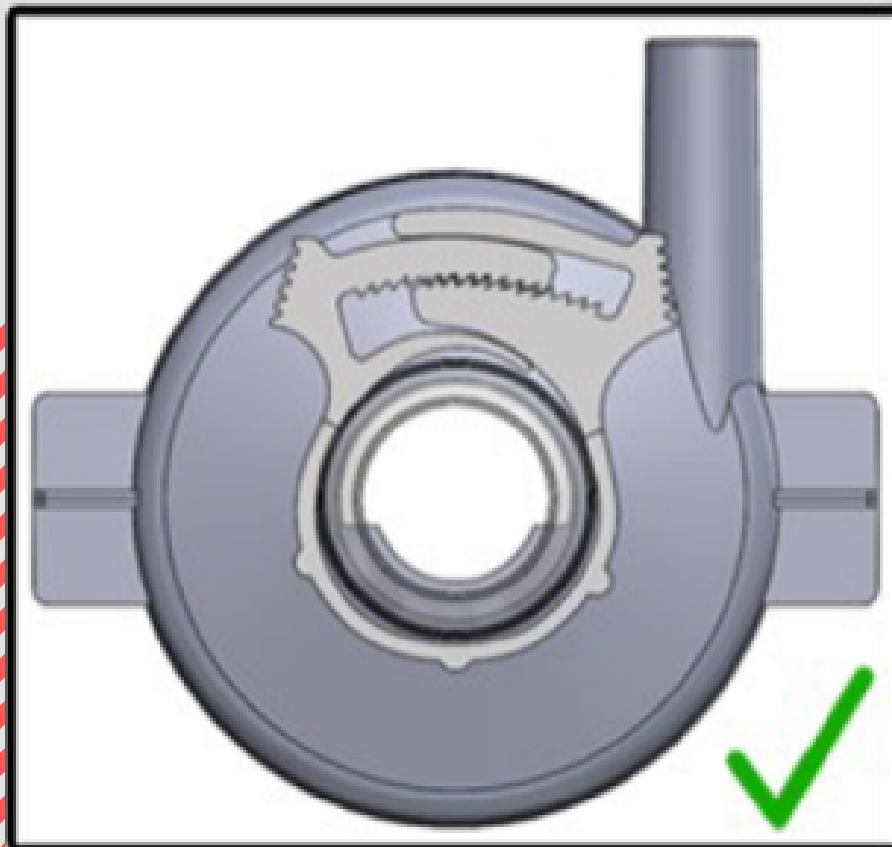


CLAMP SILICONE IN PLACE

1. Fit the snap clip
around the silicone
tube

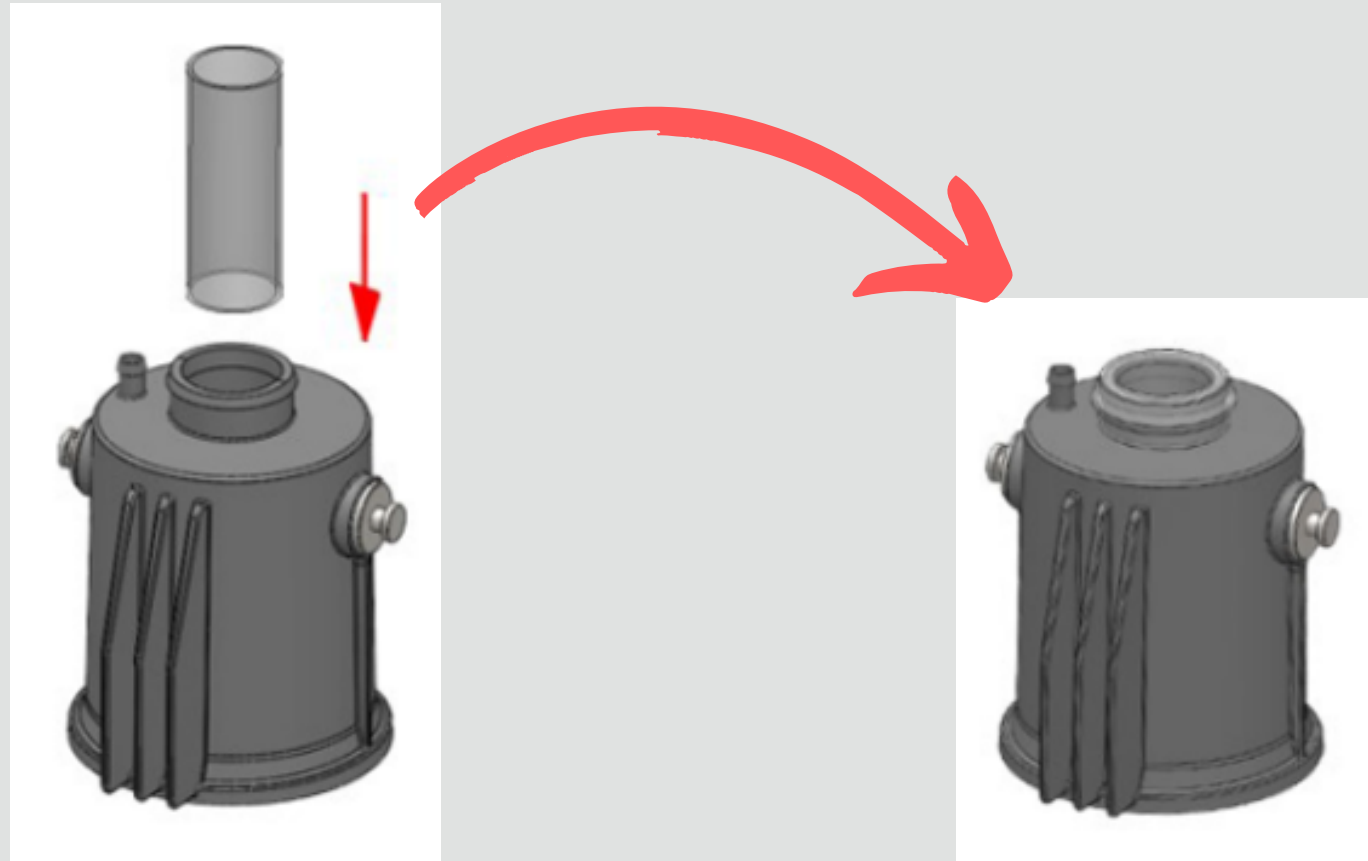
2. Ensure the positioning
is correct

3. Using pliers tighten the
clip so there are 2
"teeth" left (b)



**IMPORTANT: IF THERE IS A SOLID PLASTIC TUBE INSERT
IN THE CYLINDER NECK - REMOVE IT & DISCARD**

4

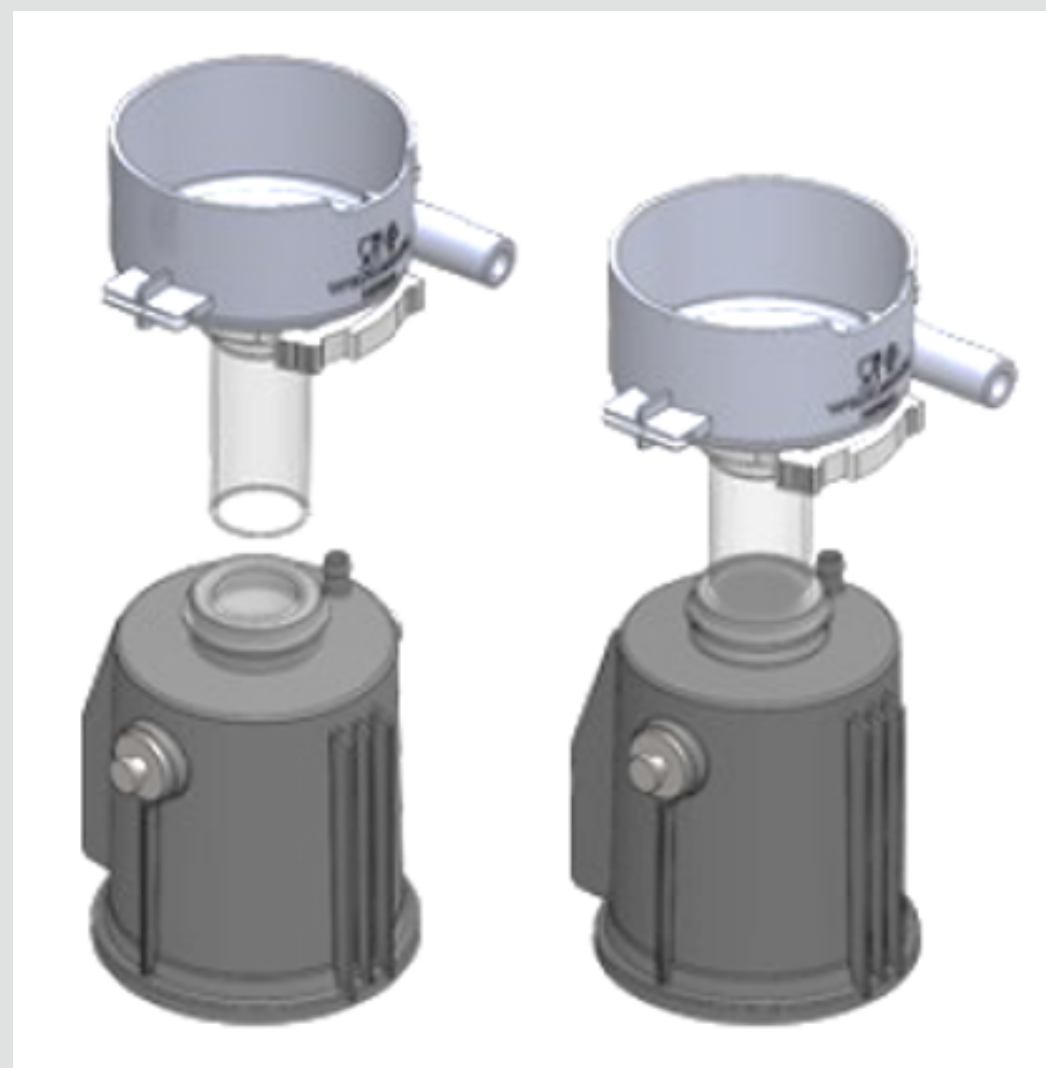


**FIT SHORTER (40mm)
SILICONE TUBE**

- 1. Fit the tube over the
brewing cylinder neck**
- 2. Once fitted – push the
tube into the brewing
cylinder**



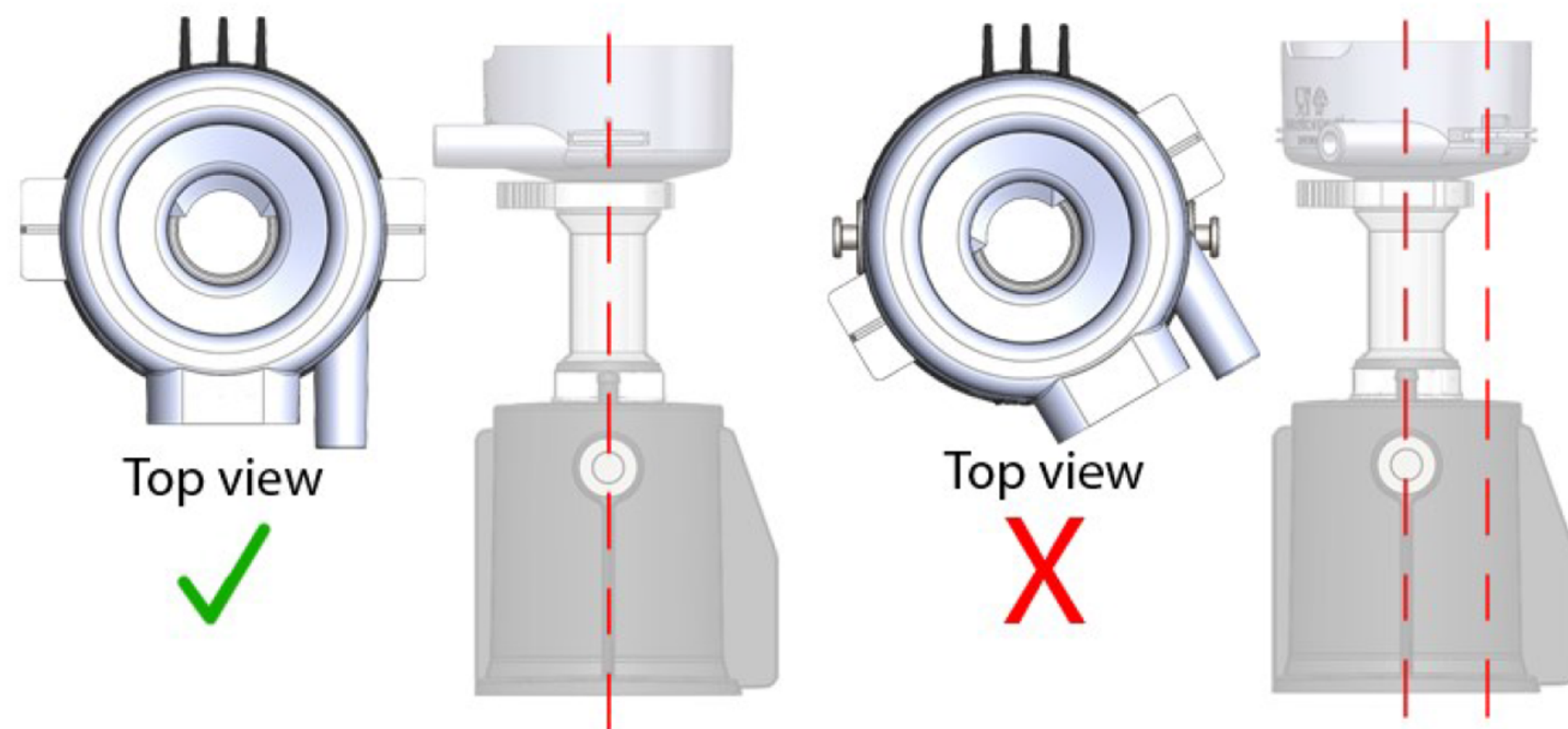
5



FIT LONGER TUBE ONTO THE BREWING CYLINDER

- 1. Fit tube over the
brewing cylinder neck**
- 2. Ensure tube fits as far
down as possible**
- 3. Use a twisting motion
to ensure a good fit**

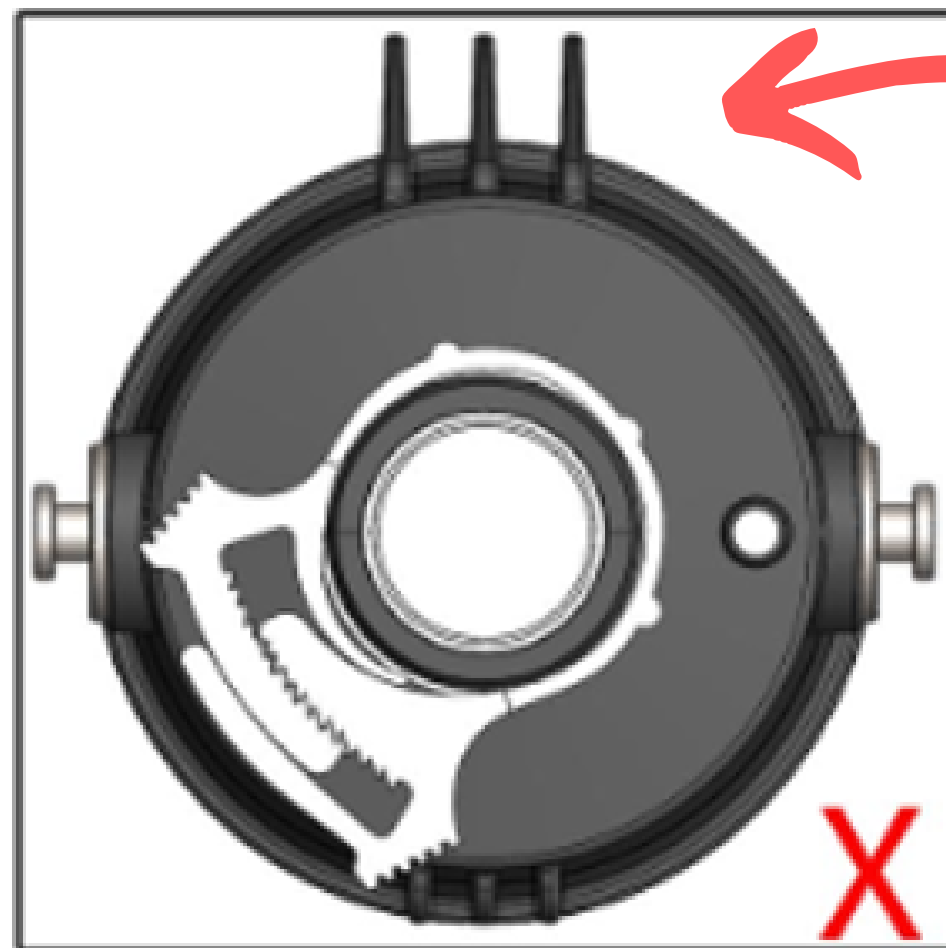
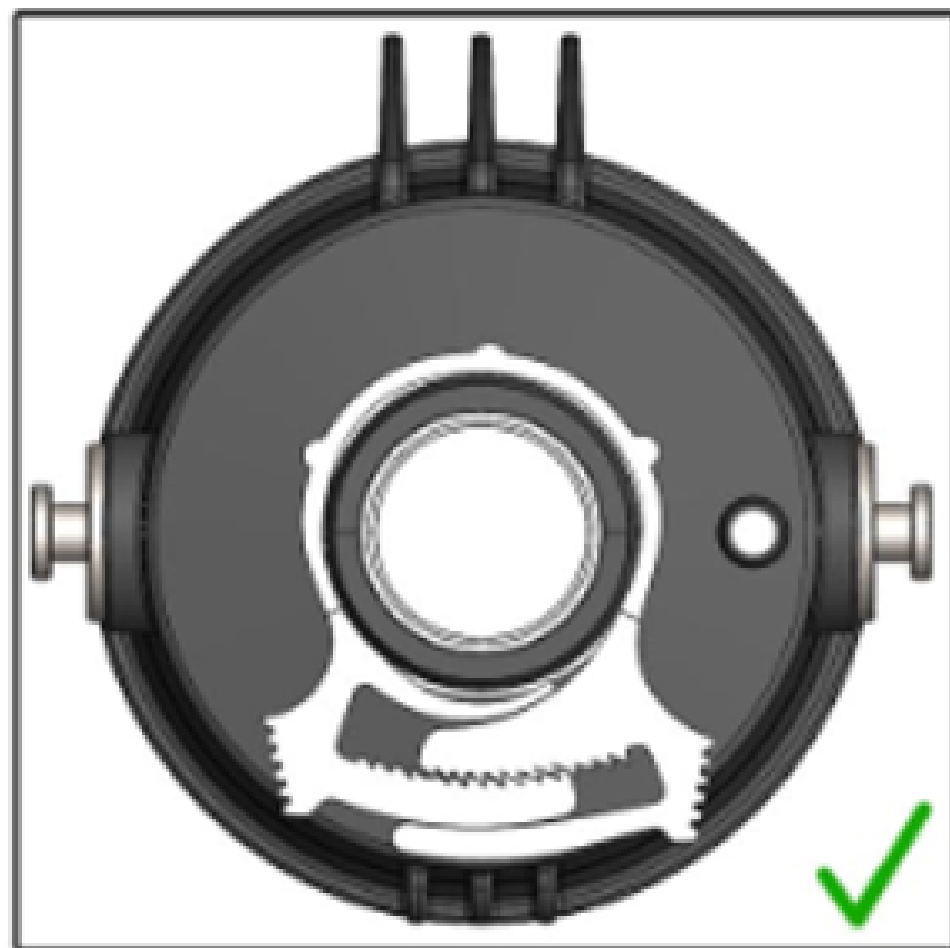
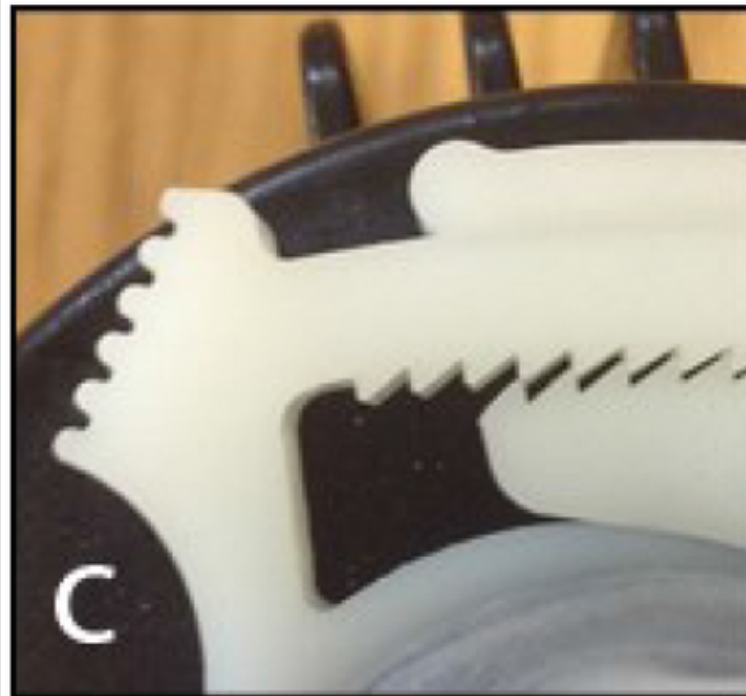
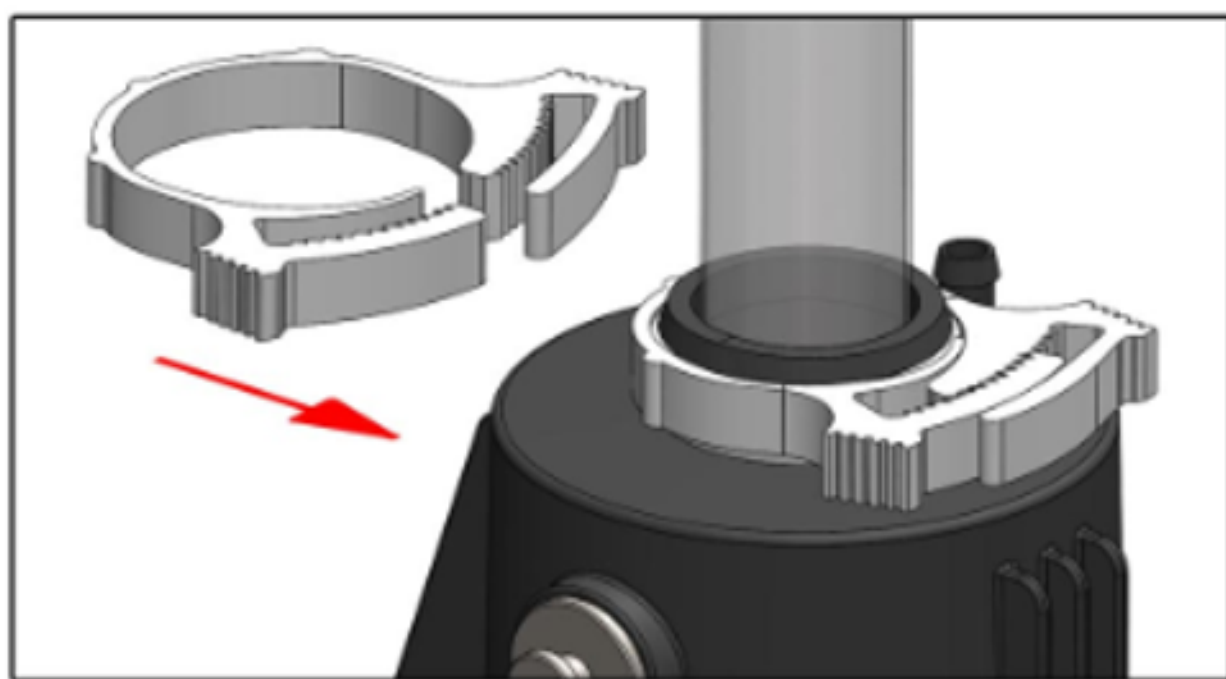




ALIGN MIXING BOWL CORRECTLY

1. Ensure the 'sidewings' of the mixing bowl are aligned with the metal grips on brewing cylinder (this ensures there is no twisting which can affect the pinch arm seal)

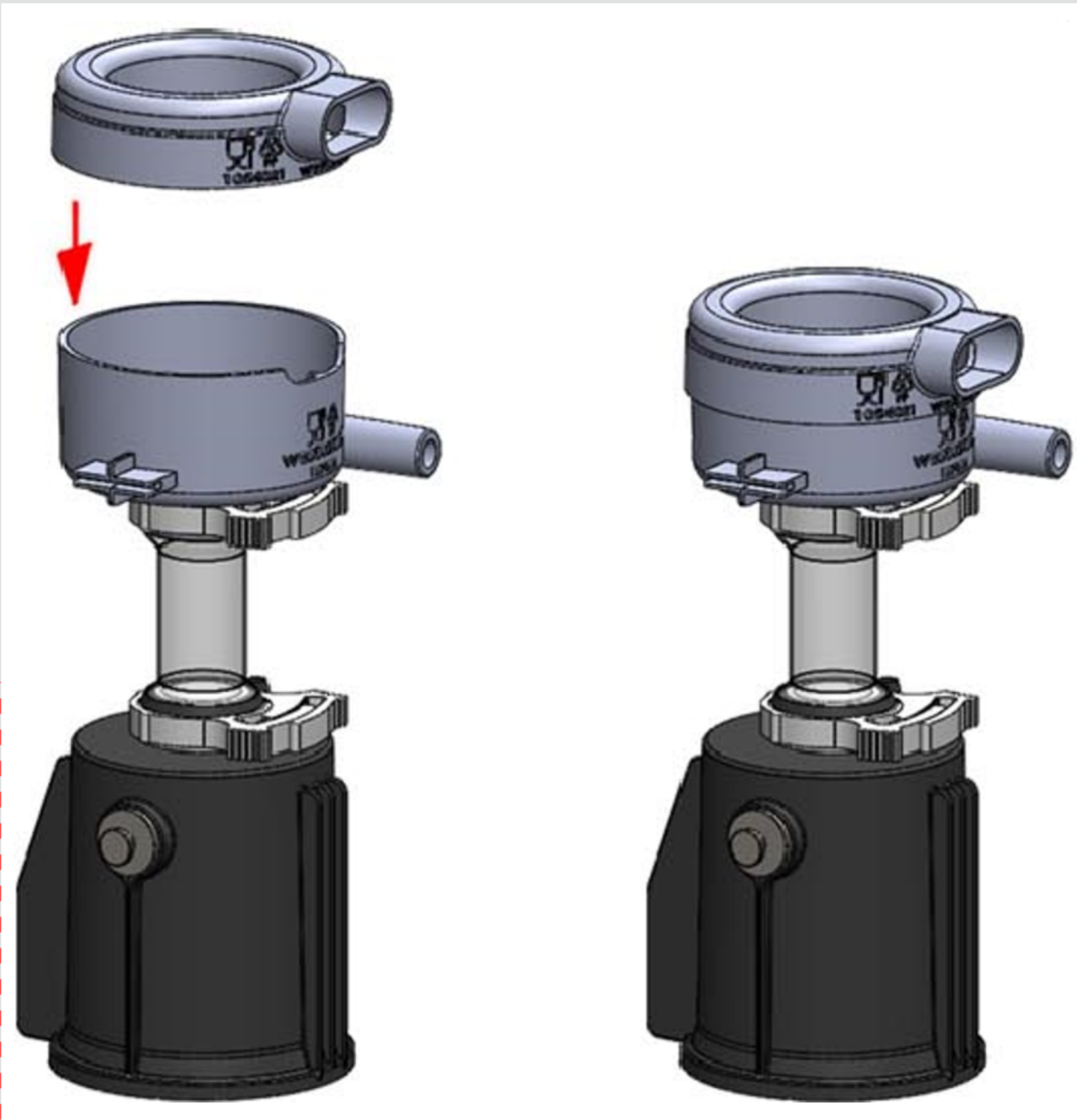
7



FIT SNAP CLIP TO BREWING CYLINDER

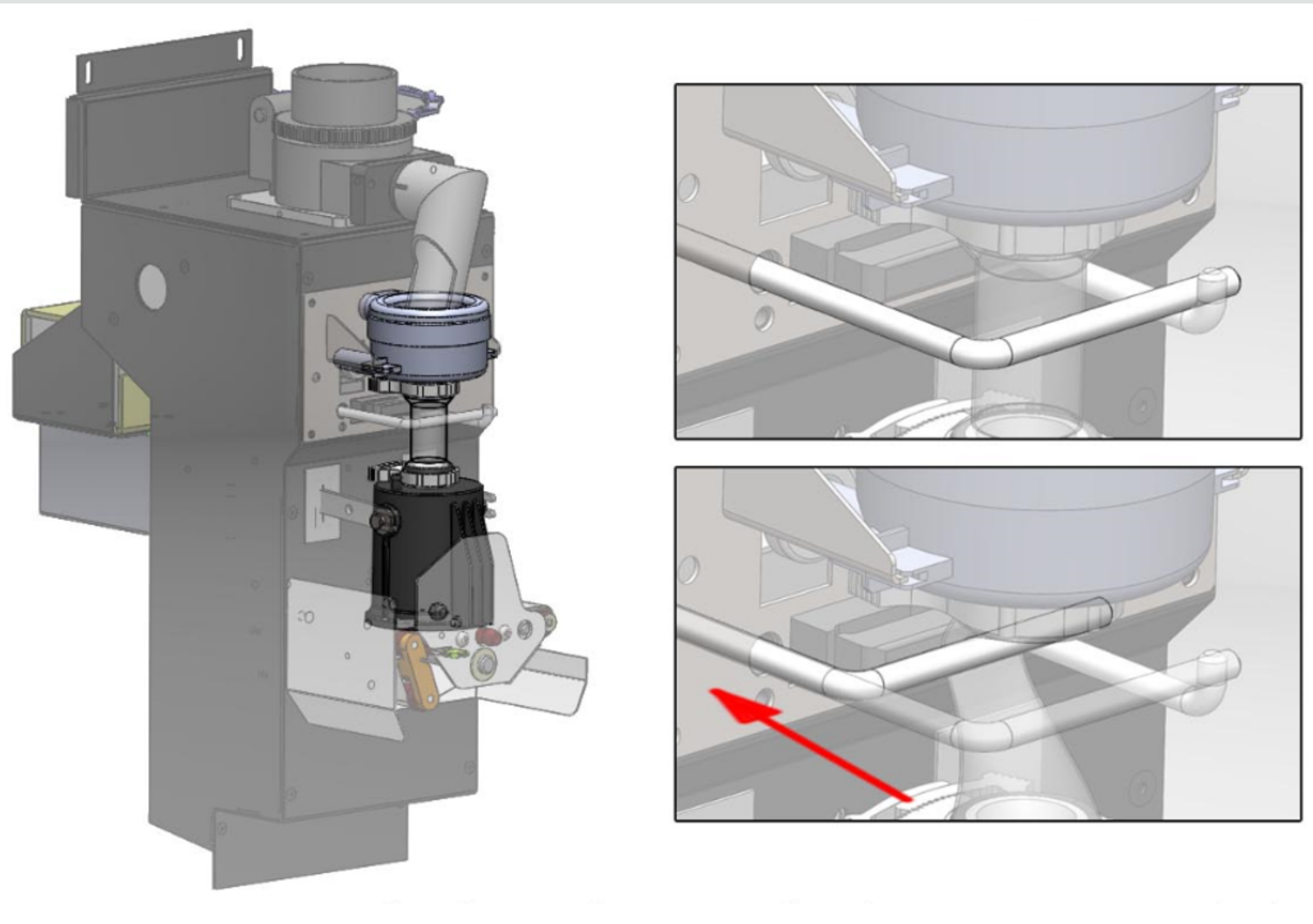
- 1. Once the silicone tube & mixing bowl are correctly aligned fit the second snap clip**
- 2. Align correctly (as shown)**
- 3. Using pliers tighten the clip so there are 3"teeth" left (c)**

8



REFIT THE STEAM HOOD TO MIXING BOWL

**1. Replace the steam
hood – aligning as
shown in the image.**



FIT COFFEE BREWER ASSEMBLY

- 1. Fit mixing bowl into the brewer – push steam hood into place**
- 2. Push pinch arm forward and backwards a couple of times (this allows silicone to stretch slightly and ensure a good seal)**

Sigma



westomatic
make it happen