

EVOLVE

FUEL YOUR BODY

CLEANING AND FILLING GUIDE

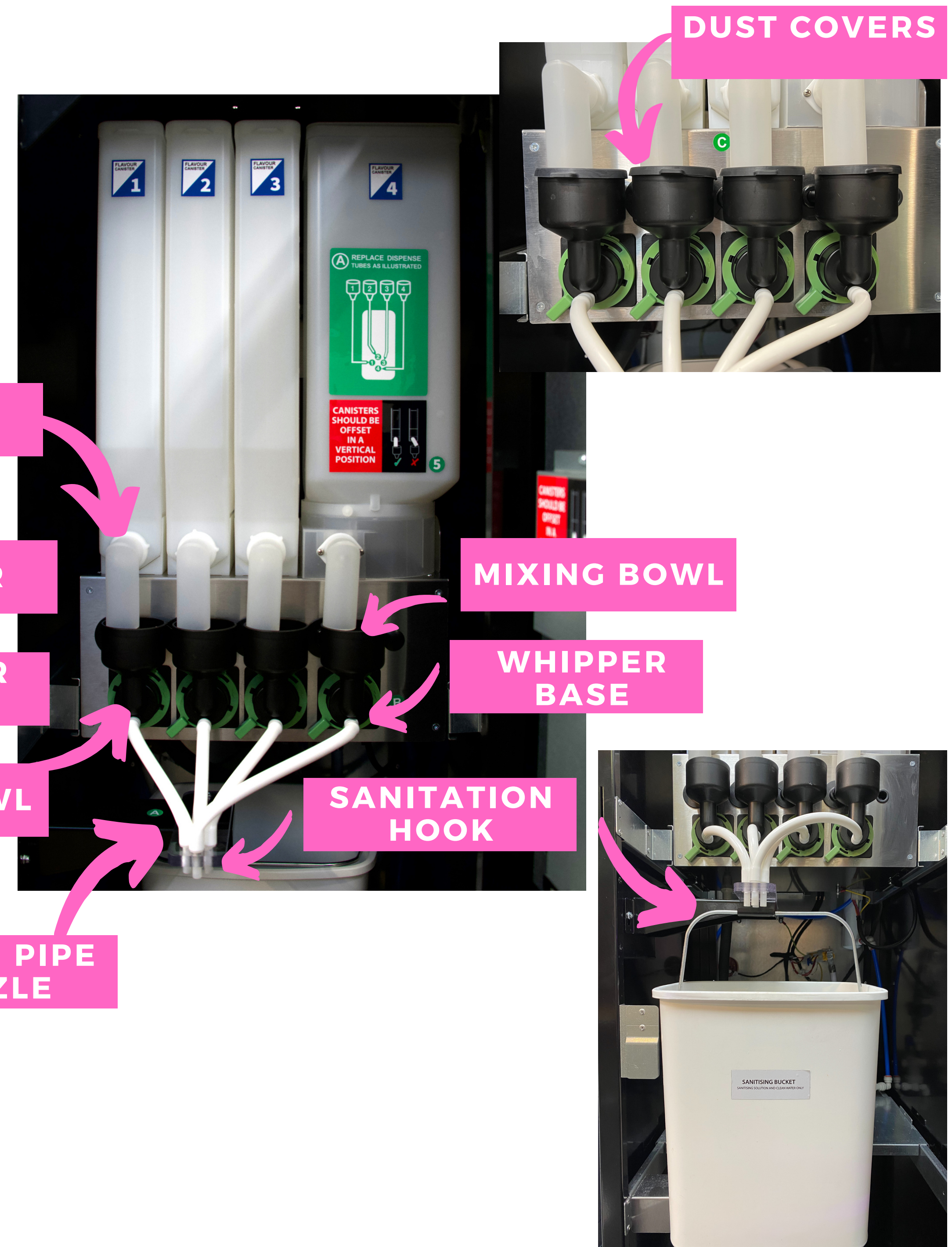
NB: THIS MACHINE MUST BE CLEANED DAILY

HYGIENE KIT

YOUR MACHINE WILL BE SUPPLIED WITH A FULL HYGIENE KIT FOR EASE OF CLEANING. WE RECOMMEND THAT YOU SWAP THE PARTS OUT, AND TAKE AWAY TO WASH, ENSURING THE PARTS ARE PROPERLY CLEANED AND MINIMISING MACHINE DOWNTIME.



CLEANING PARTS



DAILY CLEANING PROCEDURE

**REMOVE HYGIENE PARTS
AND REPLACE WITH SPARE SET**

1. BUCKET - REMOVE, EMPTY & WIPE
2. DRIP TRAY - TWIST CLIPS & PULL
3. DRIP TRAY CHUTE - REMOVE & CLEAN
4. FLAVOUR DECK - WIPE DOWN
5. NOZZLES - REMOVE FROM HEAD & CLEAN
6. CANISTER CHUTES - REMOVE & CLEAN
7. WHIPPER BASE - TWIST TO UNLOCK, REMOVE & CLEAN
8. MIXING BOWLS & LIDS - REMOVE & CLEAN
9. IMPELLERS - REMOVE & CLEAN
10. PLACE BUCKET ON SANITATION HOOK
11. PRESS FLUSH FOR FINAL CLEAN

THIS MACHINE MUST BE CLEANED DAILY

**YOUR MACHINE WILL BE SUPPLIED WITH A
FULL HYGIENE KIT FOR EASE OF CLEANING.**

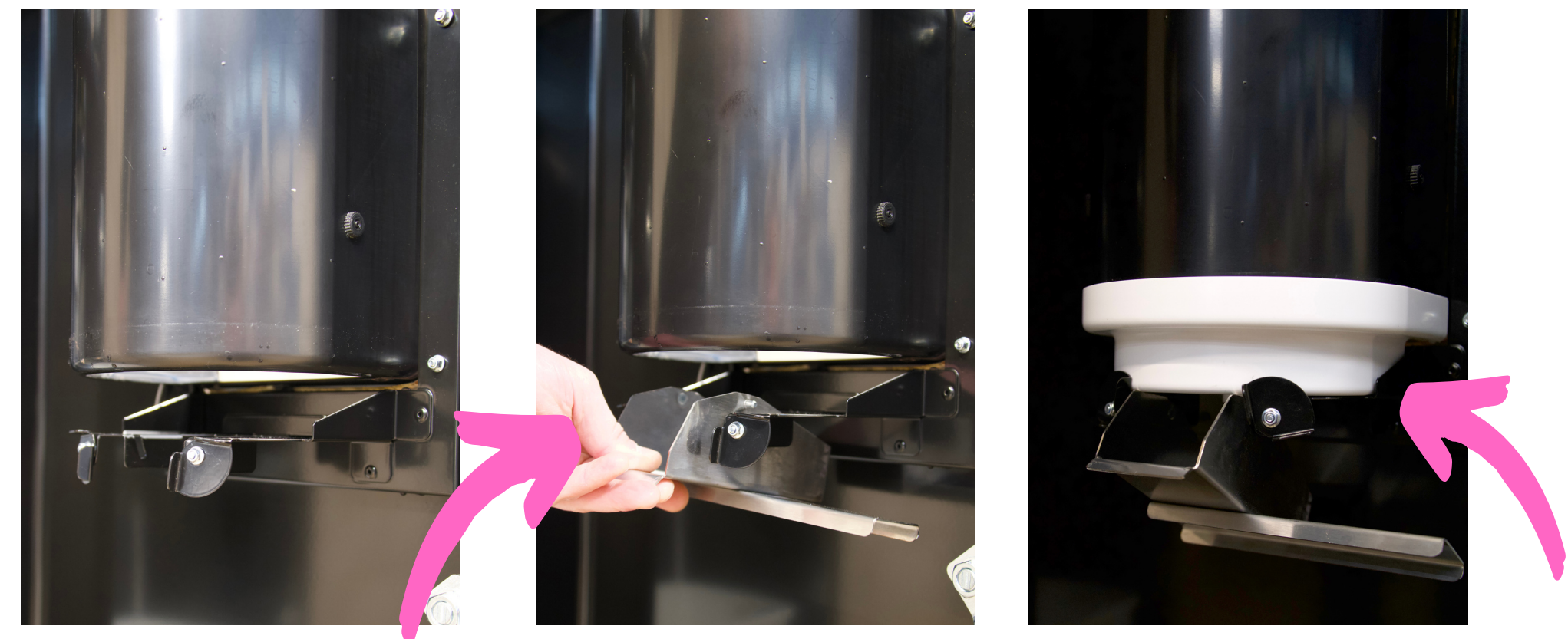
**WE RECOMMEND THAT YOU SWAP THE
PARTS OUT, AND TAKE AWAY TO WASH,
ENSURING THE PARTS ARE PROPERLY
CLEANED. THIS WILL ALSO MINIMISE
MACHINE DOWNTIME.**

EVERY 6 MONTHS

**YOUR SERVICE TECHNICIAN WILL
NEED TO DO THE FOLLOWING
EVERY 6 MONTHS:**

1. SANITISE WATER LINES
2. REPLACE UV LAMP
3. REPLACE WATER FILTER
4. CLEAN LINES WITH AQUA DOSA
5. STRIP DOWN & CLEAN ALL CONTACT PARTS
AS PER WEEKLY CLEAN

REMOVING DRIP TRAY CHUTE



DRIP TRAY CHUTE IN FIRST

CLIP DRIP TRAY IN PLACE



SCAN ME

**FOR CLEANING &
MAINTENANCE GUIDES**

User Guide

4 SIMPLE STEPS

1

PLACE BOTTLE
IN DISPENSE AREA

2

PRESS BUTTON
TO SELECT A
DRINK

3

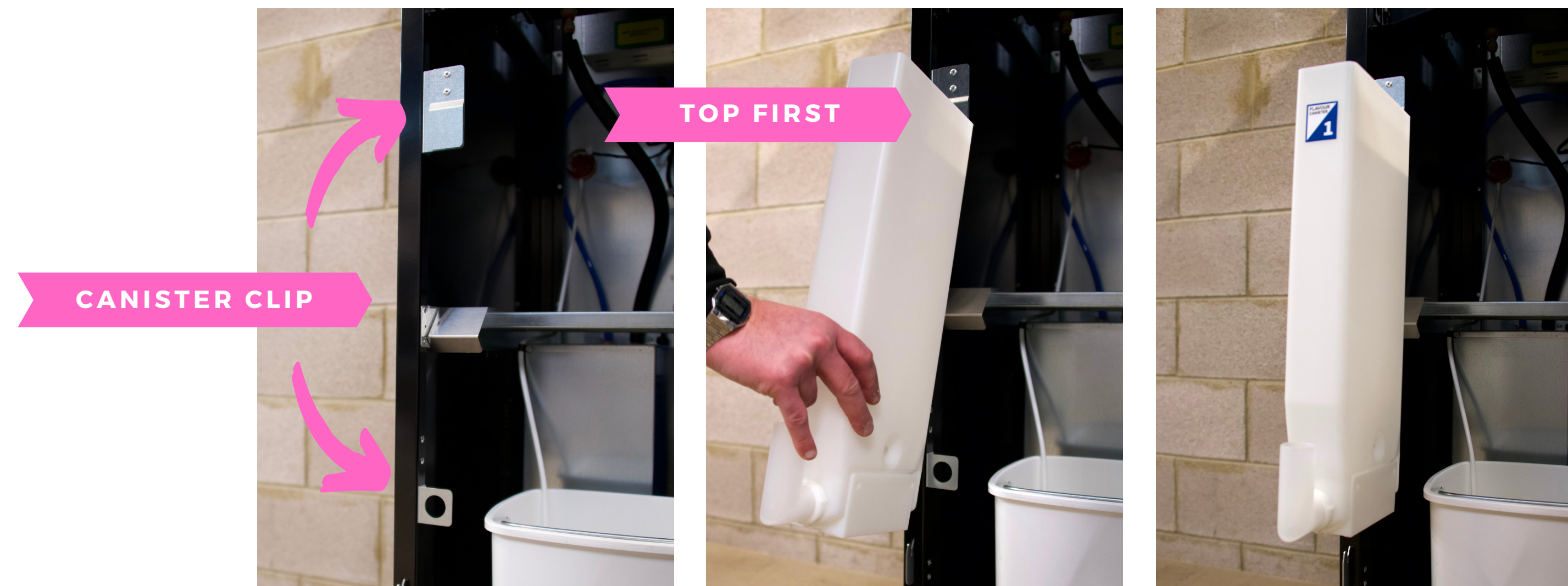
ALLOW MACHINE TO
DISPENSE DRINK

4

REMOVE BOTTLE FROM
MACHINE AND ENJOY

FILLING GUIDE

1. TWIST CHUTE UPWARDS
2. LIFT UP & REMOVE CANISTER FROM FLAVOUR DECK
3. HOOK CANISTER INTO FILLING CLIPS
4. USE FUNNEL PROVIDED TO HELP FILL
5. REPLACE CANISTER TO FLAVOUR DECK
6. TWIST CHUTE INTO PLACE - **POINT STRAIGHT DOWN**
7. ENSURE MIXING BOWL IS CLEAN AND CLEAR OF POWDER
8. PRESS FLUSH TO RUN A RINSE CYCLE



PART NUMBER: 1011013

CONTACT



Units 7-8 Block 4 Forde
Court, Forde Road,
Brunel Industrial
Estate, Newton Abbot,
Devon, TQ12 4BT

www.westomatic.com

REFUEL.
RECOVER.
REPEAT.

westomatic
make it happen



+44 (0)1626 323100



support@westomatic.com



www.westomatic.com