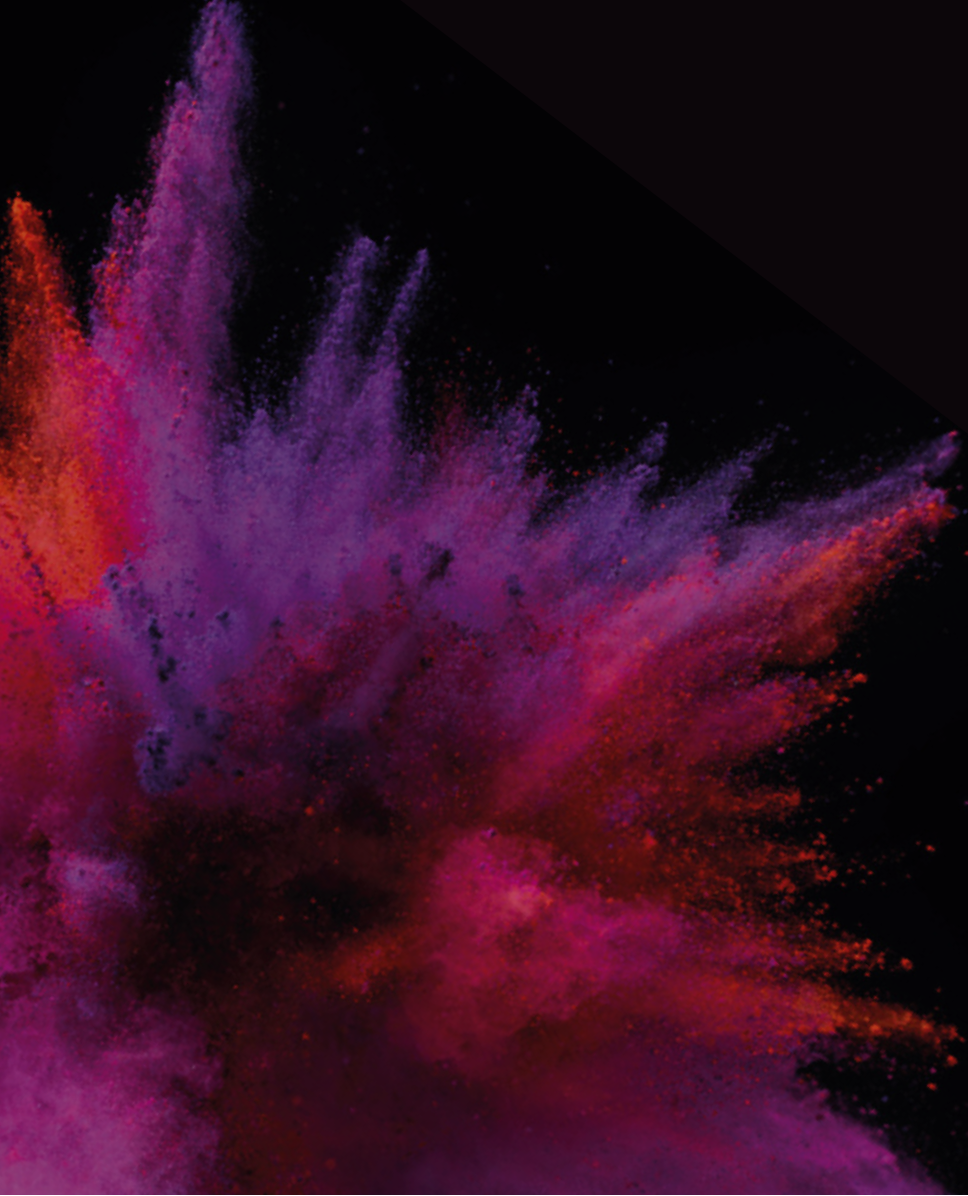


EVOLVE

FUEL YOUR BODY

CLEANING GUIDE

NB: THIS MACHINE MUST BE CLEANED DAILY



REFUEL.
RECOVER.
REPEAT

EVOLVE

DAILY CLEANING

USE HYGIENE KIT AS SUPPLIED

REMOVE ALL CONTACT PARTS /EMPTY WASTE BUCKET

1. BUCKET - remove, empty and wipe (insert overfill weight)
2. DRIP TRAY - remove and clean
3. CANISTER CHUTES - remove, and replace
4. FLAVOUR DECK - wipe down
5. MIXING BOWLS - remove, and replace (**important**)
6. IMPELLERS + DUST CAPS - remove, and replace
7. WHIPPER BASE - remove, and replace
8. BUCKET - place onto sanitation hook and FLUSH

ALSO CLEAN - FLOOR / BOTTLE DISPENSE AREA



IF MACHINE HAS BEEN LEFT WITHOUT USE

REMOVE HYGIENE PARTS AND THOROUGHLY CLEANSE

1. BUCKET - empty and wipe (insert overfill weight)
2. DRIP TRAY/CHUTE - remove and clean
3. FLAVOUR DECK - wipe down
4. MIXING BOWLS - remove, and replace (**important**)
5. IMPELLERS + DUST CAPS - remove, and replace
6. WHIPPER BASE - remove, and replace
7. BUCKET - place onto sanitation hook and FLUSH
8. CANISTERS - twist chute upwards then lift up and remove each canister. Twist the auger at the back to agitate powder (**important**)

ALSO CLEAN - FLOOR / BOTTLE DISPENSE AREA



IMPORTANT:

THIS SHOULD BE DONE WHEN THE MACHINE HAS BEEN LEFT OVER A WEEKEND OR FOR LONGER THAN 48 HOURS WITHOUT USE